

Wayne County Community Health Assessment Overview

Based on 204 Responses*

Top Sources of Health Information:

1. Healthcare providers (56.4%)
2. Friends/family (37.3%)
3. Internet (27.5%)
4. Social media (19.1%)
5. Public health officials (18.6%)



Top Risk Factors in Wayne County:

1. Lack of a livable wage (38.2%)
2. Substance misuse (37.3%)
3. Housing Insecurity (23.0%)
4. Inadequate health insurance (22.5%)
5. Tobacco use (21.1%)

Top Strengths of the Community:

1. Access to health care (34.3%)
2. Religious/Spiritual Values (32.8%)
3. Good place to raise children (31.4%)
4. Low crime (27.9%)
5. Good schools (24.0%)



Most Important Health Problems:

1. Cancers (46.1%)
2. Overdose (45.6%)
3. Diabetes (31.4%)
4. Overweight/obesity (27.0%)
5. Aging problems (23.5%)

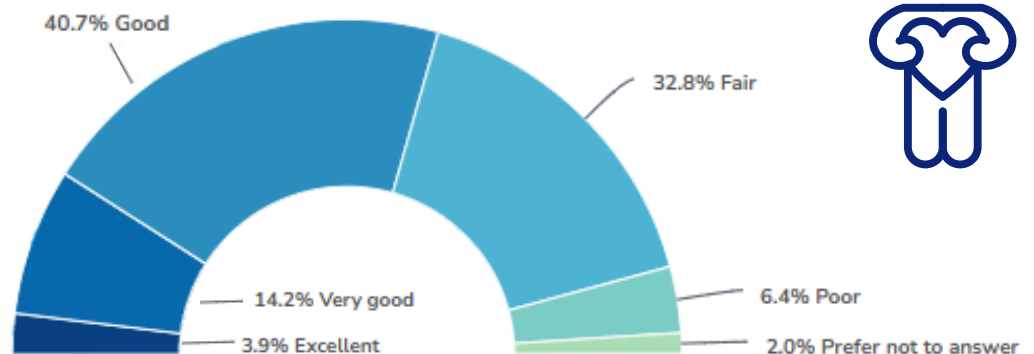


30.4%

agree that
Wayne County
is somewhat
healthy or
very healthy



Personal health ratings:





*Percents shown may add up to >100% as respondents could choose multiple answers


Wayne County Community Health Assessment Overview

Based on 204 Responses*

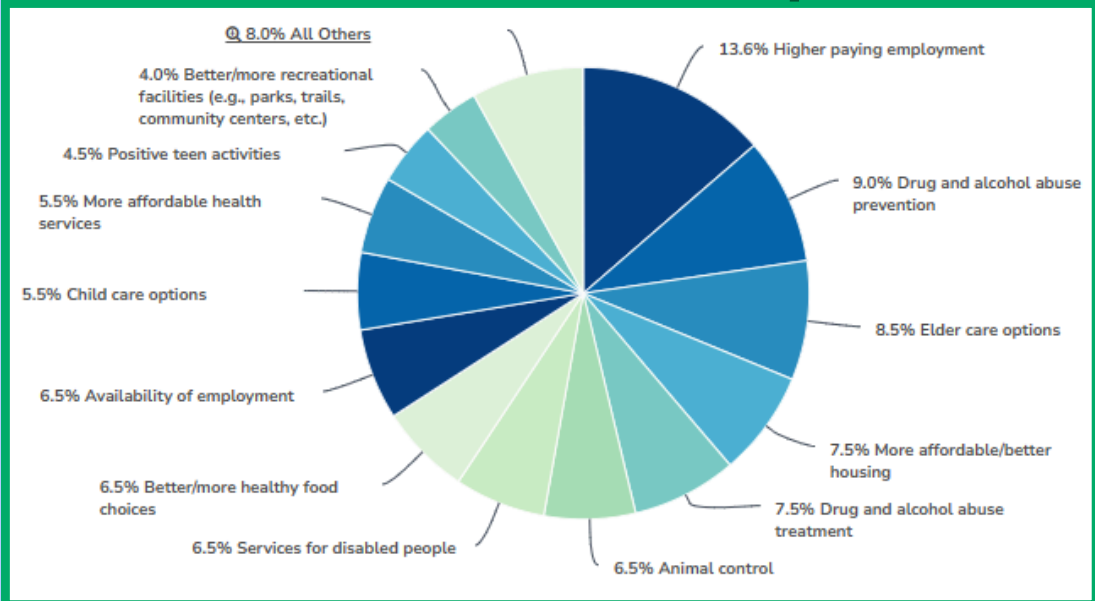
Unattainable Services:


1. None (41.2%)
2. Employment (12.7%) 
3. Housing (10.8%) 
4. Food (9.8%)
5. Addiction Services (8.8%)

63.2% were satisfied that the health department has made a positive impact in the community



87.4% agree that Wayne County is a good place to raise children 

Which service(s) need the most improvement?



69.7% are satisfied with the health care in Wayne County 

Barriers That Prevent Receiving of Health Services:

1. None (46.6%)
2. Out of pocket costs (25.0%) 
3. Lack of providers/specialists (13.7%)
4. Unable to take time off work (9.8%)
5. Lack of convenient appointment times (5.4%) 

*Percents shown may add up to >100% as respondents could choose multiple answers