

COMMUNITY HEALTH ASSESSMENT

ADDENDUM AUGUST 2022

A Healthy **Today** for
a Brighter **Tomorrow.**

ADAIR COUNTY • CASEY COUNTY • CLINTON COUNTY • CUMBERLAND COUNTY • GREEN COUNTY •
McCREARY COUNTY • PULASKI COUNTY • RUSSELL COUNTY • TAYLOR COUNTY • WAYNE COUNTY



VISION STATEMENT

The Lake Cumberland District Health Department will be a progressive leader providing innovative solutions to achieve optimal health status for our communities.

MISSION STATEMENT

The Lake Cumberland District Health Department prevents illness and injury, promotes good health practices, and assures a safe environment to protect and improve the health of our communities.

A Healthy **Today** for a Brighter **Tomorrow**.

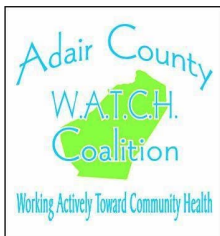
Lake Cumberland District Health Department

500 Bourne Avenue • Somerset, KY 42501
phone: (606) 678-4761 • fax: (606) 678-2708 • toll free: 1-800-928-4416

www.LCDHD.org

ACKNOWLEDGEMENT

A special thank you to the community health coalition members and organizations across the ten counties for your assistance in the development of the Lake Cumberland Community Health Assessment and Community Health Improvement Plan



Adair County (Working Actively Toward Community Health) W.A.T.C.H. Coalition



Casey County Community Health Empowerment Coalition (CHEC)



Clinton County Health Coalition



Cumberland County Health Coalition



Green County Health and Wellness Coalition



McCreary County Health and Wellness Coalition



Pulaski County (Working on Wellness) WOW Coalition



Russell County Health and Wellness Coalition

Taylor County
Wellness
Coalition

Taylor County Wellness Coalition



Wayne County Health

Published: October 2019

Revised: February 2022

Revised: August 2022

OVERVIEW/ METHODOLOGY

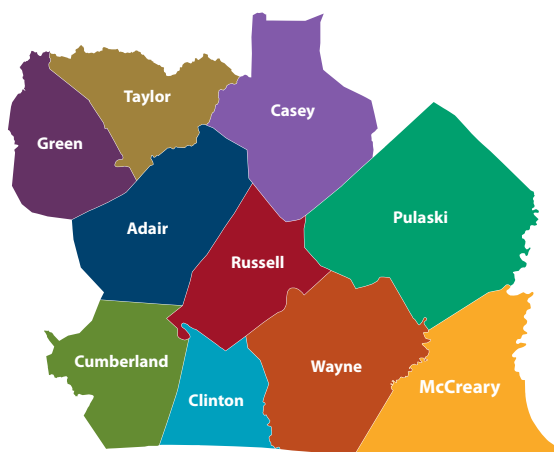
5

INTRODUCTION

6

HEALTH DATA REPORTS

Demographics and Social Determinates of Health	8
Health Behavior Risk Factors	10
Access to Care/Clinical Factors	11
Maternal, Infant and Child Health	13
Health Outcomes	14
Cancer	16
Motor Vehicle Collisions	18
Crime/Arrest	20
COVID-19 Across Lake Cumberland	23



APPENDIX A: MAPP ASSESSMENTS

25

POPULATIONS AT HIGHER RISK

26

Adair County	27
Casey County	30
Clinton County	33
Cumberland County	36
Green County	39
McCreary County	42
Pulaski County	45
Russell County	48
Taylor County	51
Wayne County	54

APPENDIX B:

10 ESSENTIAL PUBLIC HEALTH SERVICES

57

INSIDE

OVERVIEW/METHODOLOGY

COMMUNITY HEALTH ASSESSMENT

A community health assessment (CHA) provides the foundation to improve the health of the community. The information collected from a CHA provides the groundwork for setting priorities, planning, program development, policy changes, coordination of community resources, funding applications and mobilizing community resources and assets from the community partners to improve the health of that community. The CHA provides policymakers, stakeholders and the general public with health data and information to make informed decisions regarding available resources and assets to address health issues. The information collected from the CHA leads to the creation of the community health improvement plan (CHIP), which guides the health department, local partners/stakeholders and policymakers on improving the health of our communities.



MOBILIZING FOR ACTION THROUGH PLANNING AND PARTNERSHIP

The Health Policy and Promotion branch facilitated a community health assessment process based on Mobilizing for Action through Planning and Partnership (MAPP). The MAPP process uses a systematic approach to data collection, analysis, and dissemination of data. MAPP is an interactive process that improves the efficiency, effectiveness, and ultimately the performance of the local public health systems. This process includes four assessments: Community Health Status, Community Strengths and Risk Assessment, Forces of Change Assessment and the Local Public Health Assessment. Appendix A: Each of the county assessments findings are summarized on pages 22 - 53.



INTRODUCTION

The Lake Cumberland District Health Development District (LCDHD) is located in the Lake Cumberland Area Development District (LCADD), in south-central Kentucky. The area is comprised of ten counties: Adair, Casey, Clinton, Cumberland, Green, McCreary, Pulaski, Russell, Taylor and Wayne. LCDHD completed a comprehensive community assessment across our ten county's. in 2017/2018. From the assessment, community partners identified the following three top priority health issues: Obesity (nutrition and physical activity), Adult Smoking, Substance Use and Teen Pregnancy.

The following document , the 2022 Lake Cumberland District Community Health Assessment Addendum August 2022, serves as a data report with the most recent data related to health factors and health outcomes.

The data tables on pages 8 - 21 compares each of the ten counties that make-up LCDHD, Kentucky and the United States. Color coding provides visual representing if LCDHD 2018 is *Better, Similar or Worse* than its comparison variable. The legend below references how color coding is presented.

Legend

Lake Cumberland County's 2018 BETTER
Lake Cumberland County's 2018 SIMILAR (<1%)
Lake Cumberland County's 2018 Worse

Notes: The data referenced throughout this document ranges from years 2014 - 2018. This report includes the most current analyzed data available for publication.

HEALTH DATA REPORTS



DEMOGRAPHICS AND SOCIAL DETERMINATES OF HEALTH

Social determinates of health reflect the social factors and physical conditions of the environment in which people are born, live, learn, play, work and age. These factors and conditions are known as social and physical determinates of health. These determinates of health has an impact on the peoples health factors, health outcomes and quality of life.

Nine counties (Adair, Casey, Clinton, Cumberland, Green, McCreary, Pulaski, Russell and Wayne) in the Lake Cumberland District are located in the Appalachian Region. This region is noted for being at an economic disadvantage with poor health outcomes.

DEMOGRAPHICS & SOCIAL DETERMINANTS OF HEALTH													
Indicators	Adair (2018)	Adair (2014)	Casey (2018)	Casey (2014)	Clinton (2018)	Clinton (2014)	Cumb. (2018)	Cumb. (2014)	Green (2018)	Green (2014)	Kentucky (2014)	Kentucky (2018)	Data Source (2018)
Population	19,485	18,732	10,276	1,667	11,065	10,146	64,449	6,789	25,472	11,180	209,159	4,454,189	US Census Bureau 2014 & 2018
Persons 65 and over	17.9%	16.30%	19.0%	18.20%	20.3%	17.8%	18.6%	20%	17.4%	18.50%	19.1%	16.0%	US Census Bureau 2014 & 2018
Race Stats: White (%)	94.0%	0.952	97.2%	0.977	97.1%	97.2%	95.0%	0.955	95.7%	0.96	95.1%	87.8%	US Census Bureau 2014 & 2018
African American (%)	3.0%	0.029	0.9%	0.7	0.6%	97.7%	2.8%	0.029	2.2%	2.2	2.0%	8.4%	US Census Bureau 2014 & 2018
Hispanic (%)	1.9%	0.018	3.0%	0.029	2.9%	2.8%	1.3%	0.01	1.8%	1.6	2.6%	3.7%	US Census Bureau 2014 & 2018
Language other than English spoken in home (age 5+)	1.9%	—	3.7%	—	3.0%	—	2.6%	—	2.6%	—	—	5.5%	American Community Survey (2014-2018)
High School Graduation Rate (% of persons age 25+)	98%	78%	93%	89%	93%	88%	93%	78%	93%	95%	79%	89%	County Health Ranking 2014 & 2018
Unemployed: Persons 16+ (%)	6.6%	7.7%	4.6%	7.9%	7.3%	9.5%	5.5%	10.8%	4.4%	7.9%	8.2%	5.0%	County Health Ranking 2014 & 2018
Children In Poverty (%)	37%	39%	37%	40%	37%	40%	38%	42%	29%	31%	27%	24%	County Health Ranking 2014 & 2018
Children in Single Parent Households (%)	23%	27%	22%	28%	31%	41%	37%	45%	20%	34%	34%	35%	County Health Ranking 2014 & 2018
Median Household Income	\$32,900	\$31,169	\$29,400	\$28,416	\$29,600	\$26,885	\$30,800	\$29,885	\$36,200	\$33,573	\$41,717	\$46,600	US Census Bureau 2014 & 2018
Disability (% civil noninstitutionalized)	18.0%	16.9%	22.4%	16.9%	18.1%	16.9%	14.4%	16.9%	14.4%	23.3%	—	17.4%	American Community Survey (2014-2018)

DEMOGRAPHICS & SOCIAL DETERMINANTS OF HEALTH													
Indicators	McCreary (2018)	McCreary (2014)	Pulaski (2018)	Pulaski (2014)	Russell (2018)	Russell (2014)	Taylor (2018)	Taylor (2014)	Wayne (2018)	Wayne (2014)	Kentucky (2014)	Kentucky (2018)	Data Source (2018)
Population	17,465	17,989	64,449	63,903	17,775	177,752	25,472	24,649	20,716	20,678	209,159	4,454,189	US Census Bureau 2014 & 2018
Persons 65 and over	17.9%	14.0%	19.9%	17.2%	19.0%	18.7%	21.4%	17.2%	20.3%	17.6%	19.1%	16.0%	US Census Bureau 2014 & 2018
Race Stats: White (%)	91.7%	91.7%	96.4%	96.7%	96.9%	97.6%	91.4%	92.5%	95.6%	96.3%	95.1%	87.8%	US Census Bureau 2014 & 2018
African American (%)	5.7%	5.8%	1.2%	1.3%	0.9%	0.6%	5.2%	5.0%	2.1%	1.8%	2.0%	8.4%	US Census Bureau 2014 & 2018
Hispanic (%)	2.7%	2.4%	2.5%	2.3%	3.7%	3.7%	2.6%	2.0%	3.3%	2.9%	2.6%	3.7%	US Census Bureau 2014 & 2018
Language other than English spoken in home (age 5+)	3.5%	–	2.6%	–	3.1%	–	1.9%	–	1.9%	–	–	5.5%	American Community Survey (2014-2018)
High School Graduation Rate (% of persons age 25+)	88%	88%	94%	76%	90%	84%	99%	90%	93%	89%	79%	89%	County Health Ranking 2014 & 2018
Unemployed: Persons 16+	7.7%	13.3%	5.3%	9.4%	8.3%	8.6%	5.1%	7.8%	7.3%	12.4%	8.2%	5.0%	County Health Ranking 2014 & 2018
Children In Poverty (%)	38%	51%	27%	31%	37%	40%	29%	32%	38%	38%	27%	24%	County Health Ranking 2014 & 2018
Children in Single Parent Households (%)	31%	27%	38%	34%	37%	36%	50%	40%	28%	31%	34%	35%	County Health Ranking 2014 & 2018
Median Household Income	\$25,100	\$21,758	\$37,800	\$32,788	\$33,500	\$29,465	\$37,800	\$35,000	\$30,900	\$27,646	\$41,717	\$46,600	US Census Bureau 2014 & 2018
Disability (% civil noninstitutionalized)	26.5%	28.7%	19.5%	20.9%	18.2%	22.0%	20.8%	17.8%	21.8%	25.6%	–	17.4%	American Community Survey (2014-2018)

HEALTH BEHAVIOR RISK FACTORS

A risk factor is any attribute, character or exposure of an individual that increases the likelihood of developing a disease or injury. Behavioral Risk Factors usually relate to "actions" that an individual has chosen to take. They can therefore be eliminated or reduced through lifestyle or behavior choices.

HEALTH BEHAVIOR RISK FACTORS													
Indicators	Adair (2018)	Adair (2014)	Casey (2018)	Casey (2014)	Clinton (2018)	Clinton (2014)	Cumb. (2018)	Cumb. (2014)	Green (2018)	Green (2014)	Kentucky (2014)	Kentucky (2018)	Data Source (2018)
Prevalence of Adult Smoking (Age-adjusted) (%)	23%	34%	25%	30%	25%	21%	22%	27%	21%	31%	26%	24%	County Health Ranking 2014 & 2018
Physical Inactivity	36%	35%	32%	38%	34%	36%	38%	37%	34%	38%	31%	72%	County Health Ranking 2014 & 2018
Access to Physical Activity Opportunities	63%	62%	26%	—	41%	74%	11%	11%	37%	39%	62%	72%	County Health Ranking 2014 & 2018
Sexual Transmitted Diseases Chlamydia (new cases per 100,000 population)	250	230	170	113	128	98	119	146	290	348	381	395	County Health Ranking 2014 & 2018
Excessive Drinking (%)	15%	—	13%	14%	13%	—	13%	—	14%	—	12%	16%	County Health Ranking 2014 & 2018

HEALTH BEHAVIOR RISK FACTORS													
Indicators	McCreary (2018)	McCreary (2014)	Pulaski (2018)	Pulaski (2014)	Russell (2018)	Russell (2014)	Taylor (2018)	Taylor (2014)	Wayne (2018)	Wayne (2014)	Kentucky (2014)	Kentucky (2018)	Data Source (2018)
Prevalence of Adult Smoking (Age-adjusted) (%)	31%	40%	23%	27%	24%	31%	24%	23%	24%	29%	—	24%	County Health Ranking 2014 & 2018
Physical Inactivity	33%	35%	30%	33%	30%	38%	34%	28%	35%	40%	—	28%	County Health Ranking 2014 & 2018
Access to Physical Activity Opportunities	100%	100%	72%	62%	85%	79%	82%	26%	67%	42%	—	72%	County Health Ranking 2014 & 2018
Sexual Transmitted Diseases Chlamydia (new cases per 100,000 population)	314	213	218	176	214	187	273	421	171	186	—	395	County Health Ranking 2014 & 2018
Excessive Drinking (%)	12%	10%	13%	7%	13%	8.0%	14%	12%	13%	—	—	16%	County Health Ranking 2014 & 2018

ACCESS TO CARE/CLINICAL FACTORS

Access to affordable, quality health care is important to physical, social and mental health. These factors address health insurance, clinical services and the number of healthcare providers available to treat patients.

ACCESS TO CARE/CLINICAL FACTORS													
Indicators	Adair (2018)	Adair (2014)	Casey (2018)	Casey (2014)	Clinton (2018)	Clinton (2014)	Cumb. (2018)	Cumb. (2014)	Green (2018)	Green (2014)	Kentucky (2014)	Kentucky (2018)	Data Source (2018)
Primary Care Providers	3,810:1	2,669:1	15,810:1	7,955:1	2,540:1	2,550:1	1,690:1	1,708:1	0	11,220:1	1560:1	1,510:1	County Health Ranking 2014 & 2018
Dentist	6,430:1	6,225:1	7,910:1	16,082:1	5,090:1	3,428:1	2,250:1	6,819:1	2,770:1	2,829:1	1731:1	1,560:1	County Health Ranking 2014 & 2018
Mental Health Providers	550:1	1,245:1	1,440:1	1,787:1	570:1	1,286:1	610:1	852:1	690:1	2,829:1	852:1	520:1	County Health Ranking 2014 & 2018
Preventable Hospital Stays	80	182	145	185	161	206	173	213	129	103	103	77	County Health Ranking 2014 & 2018
Uninsured Adults	9%	26%	11%	27%	10%	25%	9%	25%	9%	24%	21%	8%	County Health Ranking 2014 & 2018
Uninsured Children	5%	8%	5%	8%	6%	8%	6%	7%	6%	8%	7%	4%	County Health Ranking 2014 & 2018
Diabetes Prevalence (%)	9.5%	13.0%	9.0%	13.0%	9.0%	12.0%	7.9%	13.0%	8.3%	13.0%	12%	12.1%	Centers for Disease Control (Diagnosis Diabetes 2014 & 2018)

ACCESS TO CARE/CLINICAL FACTORS													
Indicators	McCreary (2018)	McCreary (2014)	Pulaski (2018)	Pulaski (2014)	Russell (2018)	Russell (2014)	Taylor (2018)	Taylor (2014)	Wayne (2018)	Wayne (2014)	Kentucky (2014)	Kentucky (2018)	Data Source (2018)
Primary Care Providers	3,580:1	3,657:1	1,330:1	1,415:1	2,520:1	1,601:1	1,500:1	1,237:1	1,570:1	1,613:1	1560:1	1,510:1	County Health Ranking 2014 & 2018
Dentist	17,510:1	18,069:1	1,390:1	1,590:1	3,540:1	2,916:1	3,170:1	3,527:1	3,410:1	3,471:1	1731:1	1,560:1	County Health Ranking 2014 & 2018
Mental Health Providers	1,250:1	1,390:1	350:1	757:1	1,110:1	1,094:1	630:1	1,122:1	1,200:1	2,603:1	852:1	520:1	County Health Ranking 2014 & 2018
Preventable Hospital Stays	93	117	65	92	64	109	59	92	95	129	103	77	County Health Ranking 2014 & 2018
Uninsured Adults	10%	27%	10%	23%	10%	24%	8%	24%	10%	24%	21%	8%	County Health Ranking 2014 & 2018
Uninsured Children	5%	7%	4%	6%	7%	8%	4%	7%	4%	6%	7%	4%	County Health Ranking 2014 & 2018
Diabetes Prevalence (%)	10.8%	13.0%	11.2%	12.0%	10.0%	13.0%	8.6%	13.0%	11.2%	13.0%	12.0%	9.1%	Centers for Disease Control (Diagnosis Diabetes 2014 & 2018)

MATERNAL, INFANT AND CHILD HEALTH

Maternal, Infant and Child Health topic areas address a wide range of conditions, health behaviors and health systems indicators that affect the health, wellness and quality of life of women, children and families.

MATERNAL HEALTH FACTORS													
Indicators	Adair (2018)	Adair (2014)	Casey (2018)	Casey (2014)	Clinton (2018)	Clinton (2014)	Cumb. (2018)	Cumb. (2014)	Green (2018)	Green (2014)	Kentucky (2014)	Kentucky (2018)	Data Source (2018)
Teen Birth Rates – per 1,000 females (15-19)	15.3	28.8	51.2	62.6	26.6	77.5	26.7	65.5	37.3	64.8	34.7	26.5	Kentucky Vital Statistics 2014 & 2018
Low Weight Babies	8%	9%	9%	9%	10%	11%	8%	12%	8%	8%	9%	9%	County Health Ranking 2014 & 2018
Smoking During Pregnancy (%)	25.6%	25.0%	25.3%	31.9%	28.8%	28.4%	26.2%	29.0%	19.5%	22.8%	22.6%	18.1%	KIDS Count Data Center 2014 & 2018)

MATERNAL HEALTH FACTORS													
Indicators	McCreary (2018)	McCreary (2014)	Pulaski (2018)	Pulaski (2014)	Russell (2018)	Russell (2014)	Taylor (2018)	Taylor (2014)	Wayne (2018)	Wayne (2014)	Kentucky (2014)	Kentucky (2018)	Data Source (2018)
Teen Birth Rates – per 1,000 females (15-19)	47.0	83.5	42.5	49.6	36.9	57.5	27.7	53.1	58.5	72.5	34.7	26.5	Kentucky Vital Statistics 2014 & 2018
Low Weight Babies	11%	9%	8%	9%	9%	8%	9%	8%	8%	7%	9%	9%	County Health Ranking 2014 & 2018
Smoking During Pregnancy (%)	28.5%	34.3%	23.0%	28.1%	27.6%	36.4%	24.0%	31.7%	38.0%	38.3%	22.6%	18.1%	KIDS Count Data Center 2014 & 2018

HEALTH OUTCOMES

Health Outcomes are a change in health status of an individual, group or population. Mortality and morbidity factors contribute to health outcomes.

HEALTH OUTCOMES													
Indicators	Adair (2018)	Adair (2014)	Casey (2018)	Casey (2014)	Clinton (2018)	Clinton (2014)	Cumb. (2018)	Cumb. (2014)	Green (2018)	Green (2014)	Kentucky (2014)	Kentucky (2018)	Data Source (2018)
Premature Death (years of potential life lost before age 75 per 100,000 population (age-adjusted))	8,300	7,968	11,400	10,495	11,900	9,670	10,300	13,257	9,400	8,097	8,768	9,000	County Health Ranking 2014 & 2018
Poor Mental Health Days	4.7	5.0	5.0	5.1	4.6	4.4	4.6	5.0	4.3	5.1	4.3	4.8	County Health Ranking 2014 & 2018
Adult Obesity	37%	34%	37%	35%	35%	32%	34%	34%	38%	30%	33%	33%	County Health Ranking 2014 & 2018
Diabetes Prevalence	9.5%	13.0%	9.0%	13.0%	9.0%	12.0%	7.9%	13.0%	8.3%	13.0%	12.0%	12.1%	Centers for Disease Control (Diagnosis Diabetes 2014 & 2018)
Drug Overdose Nonfatal (numbers)	37	Unreliable	55	Unreliable	9	41	10	Unreliable	28	Suppressed	–	11,883	Kentucky Injury Prevention and Research Center 2014 & 2018
Drug Overdose Deaths (numbers)	*	14	5	12	0	29	0	10	0	Suppressed	–	1250	Kentucky Injury Prevention and Research Center 2014 & 2018

HEALTH OUTCOMES													
Indicators	McCreary (2018)	McCreary (2014)	Pulaski (2018)	Pulaski (2014)	Russell (2018)	Russell (2014)	Taylor (2018)	Taylor (2014)	Wayne (2018)	Wayne (2014)	Kentucky (2014)	Kentucky (2018)	Data Source (2018)
Premature Death (years of potential life lost before age 75 per 100,000 population (age-adjusted))	12,400	9,612	10,100	9,194	10,800	9,453	9,200	9,198	9,500	8,228	8,768	9,000	County Health Ranking 2014 & 2018
Poor Mental Health Days	5.5	6.2	4.3	4	4.6	4	4.7	4.2	5.1	5.7	4.3	4.8	County Health Ranking 2014 & 2018
Adult Obesity	38%	32%	34%	32%	35%	32%	34%	32%	40%	32%	33%	33%	County Health Rankings (2018)
Diabetes Prevalence	10.8%	13.0%	11.2%	12.0%	10.0%	13.0%	8.6%	13.0%	11.2%	13.0%	12.0%	9.1%	Centers for Disease Control (Diagnosis Diabetes 2017 & 2018)
Drug Overdose Nonfatal (numbers)	23	Unreliable	114	21	37	41	93	32	27	Unreliable	–	11,883	Kentucky Injury Prevention and Research Center 2014 & 2018
Drug Overdose Deaths (numbers)	0	10	10	66	6	36	8	39	0	15	–	1250	Kentucky Injury Prevention and Research Center 2014 & 2018

APPENDIX B: 10 ESSENTIAL PUBLIC HEALTH SERVICES

The 10 Essential Public Health Services provide a framework for public health to protect and promote the health of all people in all communities.

1. Monitor health status to identify community health problems.
2. Diagnose and investigate health problems and health hazards in the community.
3. Inform, educate, and empower people about health issues.
4. Mobilize community partnerships to identify and solve health problems.
5. Develop policies and plans that support individual and community health efforts.
6. Enforce laws and regulations that protect health and ensure safety.
7. Link people to needed personal health services and assure the provision of health care when otherwise unavailable.
8. Assure a competent public health and personal health care workforce.
9. Evaluate effectiveness, accessibility, and quality of personal and population-based health services.
10. Research for new insights and innovative solutions to health problems.



CANCER

Cancer is a term for diseases in which abnormal cells divide without control and can invade nearby tissues.

CANCERS													
Indicators	Adair (2017)	Adair (2014)	Casey (2017)	Casey (2014)	Clinton (2017)	Clinton (2014)	Cumb. (2017)	Cumb. (2014)	Green (2017)	Green (2014)	Kentucky (2017)	Kentucky (2014)	Data Source (2017)
Cancer Deaths (rate per 100,000; Age-adjusted)	163.90	165.50	187.40	226.40	142.30	235.80	214.30	189.40	122.90	136.10	198	181.30	Kentucky Cancer Registry 2014 & 2017
Breast Cancer Deaths (rate per 100,000; Age- adjusted)	–	36.90	–	46.03	–	–	–	0.00	–	–	21.10	20.70	Kentucky Cancer Registry 2014 & 2017
Colorectal Cancer Death Deaths (rate per 100,000; Age-adjusted)	–	–	23.60	25.80	–	–	52.60	–	–	–	16.40	16.90	Kentucky Cancer Registry 2014 & 2017
Lung Cancer Deaths (rate per 100,000; Age-adjusted)	50.60	63.00	34.20	99.50	48.10	85.50	68.00	74.30	37.50	48.40	55.5	66.8	Kentucky Cancer Registry 2014 & 2017
Invasive Breast Cancer Incidence (rate per 100,000; Age-adjusted)	168.30	88.70	72.00	130.00	91.20	–	201.40	108.00	100.90	152.60	126.20	129.00	Kentucky Cancer Registry 2014 & 2017
Invasive Colorectal Cancer Incidence (rate per 100,000; Age-adjusted)	50.90	54.40	33.50	58.80	42.20	63.20	67.50	–	44.60	78.70	45.10	49.80	Kentucky Cancer Registry 2014 & 2017
Invasive Lung Cancer Incidence (rate per 100,000; Age- adjusted)	129.60	60.10	66.70	116.60	92.20	70.80	47.80	143.90	80.10	102.40	87.50	93.40	Kentucky Cancer Registry 2014 & 2017

CANCERS													
Indicators	McCreary (2017)	McCreary (2014)	Pulaski (2017)	Pulaski (2014)	Russell (2017)	Russell (2014)	Taylor (2017)	Taylor (2014)	Wayne (2017)	Wayne (2014)	Kentucky (2017)	Kentucky (2014)	Data Source (2017)
Cancer Deaths (rate per 100,000; Age-adjusted)	236.4	185.2	195.3	235.5	235.5	205	234.5	245.4	204.9	208.2	198.0	181.3	Kentucky Cancer Registry 2014 & 2017
Breast Cancer Deaths (rate per 100,000; Age- adjusted)	–	–	28.3	23.5	–	–	24.5	–	–		21.1	20.7	Kentucky Cancer Registry 2014 & 2017
Colorectal Cancer Death Deaths (rate per 100,000; Age-adjusted)	19.2	–	19.8	15.9	–	28.70	–	31.40	21.1	27.40	16.4	16.9	Kentucky Cancer Registry 2014 & 2017
Lung Cancer Death Rate (rate per 100,000; Age-adjusted)	81.6	91.8	63.1	84.7	94.0	92.5	70.9	71.6	58.1	64.9	55.5	66.8	Kentucky Cancer Registry 2014 & 2017
Invasive Breast Cancer Incidence (rate per 100,000; Age-adjusted)	62.9	145.1	109.0	147.4	113.7	113.0	72.6	155.7	119.2	118.3	126.20	129.00	Kentucky Cancer Registry 2014 & 2017
Invasive Colorectal Cancer Incidence (rate per 100,000; Age-adjusted)	56.4	89.8	44.6	61.0	47.5	60.9	46.1	69.8	62.7	59.1	45.10	49.80	Kentucky Cancer Registry 2014 & 2017
Invasive Lung Cancer Incidence (rate per 100,000; Age- adjusted)	135.6	143.5	94.1	102.8	105.7	114.6	68.4	116.9	86.6	68.7	87.50	93.40	Kentucky Cancer Registry 2014 & 2017

MOTOR VEHICLE COLLISIONS

A traffic collision, also called a motor vehicle collision, occurs when a vehicle collides with another vehicle, pedestrian, animal, road debris or other stationary obstruction, such as a tree, pole or building. Traffic collisions often result in injury, death and property damage.

MOTOR VEHICLE COLLISIONS													
Indicators	Adair (2018)	Adair (2014)	Casey (2018)	Casey (2014)	Clinton (2018)	Clinton (2014)	Cumb. (2018)	Cumb. (2014)	Green (2018)	Green (2014)	Kentucky (2014)	Kentucky (2018)	Data Source (2018)
Motor Vehicle Crash Deaths (#)	22	29	24	35	27	47	53	43	29	29	20	17	County Health Ranking 2014 & 2018
Fatal Collision (#)	2	5	2	4	3	3	1	3	2	3	612	664	Kentucky Traffic Collision Facts, 2014 & 2018
Injury Collision (#)	38	61	38	41	27	22	18	19	41	45	22,958	22,846	Kentucky Traffic Collision Facts, 2014 & 2018
Property Damaged Collision (#)	173	233	143	127	133	86	62	104	144	117	103,756	110,775	Kentucky Traffic Collision Facts, 2014 & 2018
Collisions Involving Drinking Drivers													
Fatal Collision (#)	0	1	0	1	0	1	0	1	2	0	214	71	Kentucky Traffic Collision Facts, 2014 & 2018
Injury Collision (#)	3	2	2	4	2	2	1	0	1	2	1,432	1,137	Kentucky Traffic Collision Facts, 2014 & 2018
Property Damage Collision (#)	4	4	1	3	3	2	0	1	4	2	2,759	2,372	Kentucky Traffic Collision Facts, 2014 & 2018
Driving Under Influence of Drugs													
Fatal Collision (#)	0	3	0	2	0	2	1	2	0	1	191	53	Kentucky Traffic Collision Facts, 2014 & 2018
Injury Collisions (#)	4	2	0	7	3	0	1	2	0	5	574	585	Kentucky Traffic Collision Facts, 2014 & 2018

MOTOR VEHICLE COLLISIONS													
Indicators	McCreary (2018)	McCreary (2014)	Pulaski (2018)	Pulaski (2014)	Russell (2018)	Russell (2014)	Taylor (2018)	Taylor (2014)	Wayne (2018)	Wayne (2014)	Kentucky (2014)	Kentucky (2018)	Data Source (2018)
Motor vehicle crash deaths (#)	28	22	82.0	18	42.0	34	35.0	20	39.0	27	20	17	County Health Ranking 2014 & 2018
Fatal Collision (#)	7	3	11	10	4	6	6.0	2	3	2	612	664	Kentucky Traffic Collision Facts, 2014 & 2018
Injury Collision (#)	581	66	265	293	45	58	81	102	83	70	22,958	22,846	Kentucky Traffic Collision Facts, 2014 & 2018
Property Damaged Collision (#)	1,940	137	1,472	1,309	292	246	633	542	265	277	103,756	110,775	Kentucky Traffic Collision Facts, 2014 & 2018
<i>Collisions Involving Drinking Drivers</i>													
Fatal Collision (#)	0	1	4	2	0	2	0	1	0	0	214	71	Kentucky Traffic Collision Facts, 2014 & 2018
Injury Collision (#)	28	4	8	15	2	0	4	7	2	8	1432	1137	Kentucky Traffic Collision Facts, 2014 & 2018
Property Damage Collision (#)	30	1	20	14	8	3	15	20	4	4	2759	2372	Kentucky Traffic Collision Facts, 2014 & 2018
<i>Driving Under Influence of Drugs</i>													
Fatal Collision (#)	0	1	1	0	1	2	0	0	0	2	191	53	Kentucky Traffic Collision Facts, 2014 & 2018
Injury Collision (#)	1	5	5	6	0	6	2	0	0	1	574	585	Kentucky Traffic Collision Facts, 2014 & 2018

CRIME/ARREST

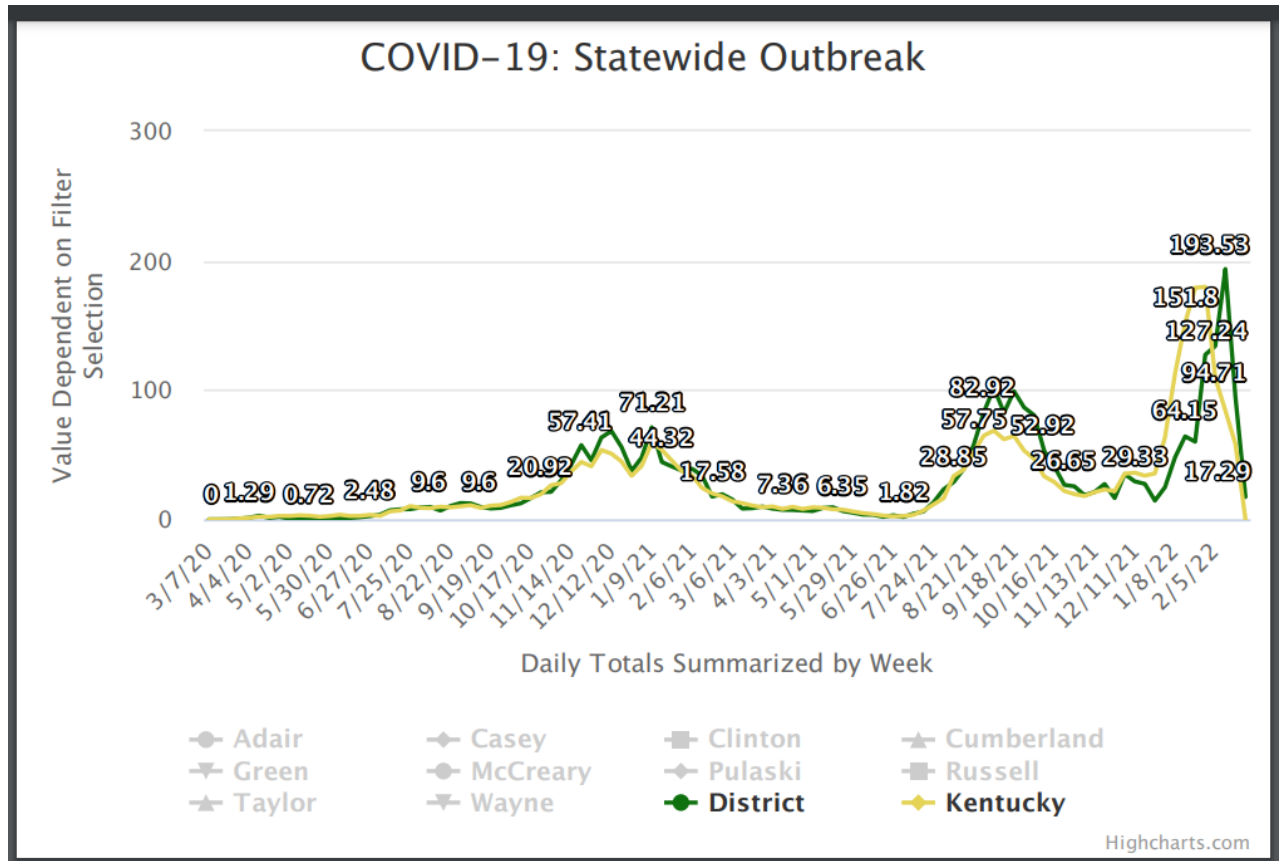
An arrest is the act of depriving people of their liberty, usually in relation to a investigation or prevention of a crime and thus detaining the arrested person in a procedure as part of the criminal justice system.

CRIME/ARRESTS													
Indicators	Adair (2018)	Adair (2014)	Casey (2018)	Casey (2014)	Clinton (2018)	Clinton (2014)	Cumb. (2018)	Cumb. (2014)	Green (2018)	Green (2014)	Kentucky (2014)	Kentucky (2018)	Data Source (2018)
<i>Arrests by Drug Type (per 100,000)</i>													
Cocaine	1	26	0	1	0	0	0	2	0	0	–	41	Crime in KY Report, KY State Police 2014 & 2018
Marijuana	0	35	0	28	0	47	0	23	0	37	15,131	133	Crime in KY Report, KY State Police 2014 & 2018
Methamphetamine	109	16	61	41	77	12	32	9	60	10	5,224	25,766	Crime in KY Report, KY State Police 2014 & 2018
Heroin	0	0	0	0	0	1	0	0	0	1	2,653	95	Crime in KY Report, KY State Police 2014 & 2018
Opiates	103	–	93	–	169	–	85	–	37	–	–	21,130	Crime in KY Report, KY State Police 2014 & 2018

CRIME/ARRESTS													
Indicators	McCreary (2018)	McCreary (2014)	Pulaski (2018)	Pulaski (2014)	Russell (2018)	Russell (2014)	Taylor (2018)	Taylor (2014)	Wayne (2018)	Wayne (2014)	Kentucky (2014)	Kentucky (2018)	Data Source (2018)
<i>Arrests by Drug Type (per 100,000)</i>													
Cocaine	0	0	1	3	1	0	0	37	0	6	–	41	Crime in KY Report, KY State Police 2014 & 2018
Marijuana	0	81	1	145	0	16	1	123	0	32	15,131	133	Crime in KY Report, KY State Police 2014 & 2018
Methamphetamine	79	33	266	42	113	7	220	30	80	47	5,224	25,766	Crime in KY Report, KY State Police 2014 & 2018
Heroin	0	0	0	6	0	0	3	20	0	6	2,653	95	Crime in KY Report, KY State Police 2014 & 2018
Opiates	159	–	452	–	229	–	187	–	220	–	–	21,130	Crime in KY Report, KY State Police 2014 & 2018

COVID-19 ACROSS LAKE CUMBERLAND

The COVID-19 pandemic was confirmed in Kentucky in March 2020. Governor Andy Beshear's office implemented a state of emergency at that time. The first case of COVID-19 in the Lake Cumberland District was in March 2020. Below is a chart that show the number of COVID-19 cases between March 2020 and February 2022.



Source: www.lcdhd.org

In Awe of Covid Vaccines

We have had more than a year of experience with Covid vaccines; many studies showed excellent protection from severe disease, even when there was a mismatch with the SARS-CoV-2 variants such as Omicron. Antibodies do wane; therefore, infection becomes more likely, but protection for severity seems to be maintained. Boosters have also been shown to enhance antibody levels and protection. National data shows that the majority of hospitalizations and deaths occurred in the unvaccinated population.

We compiled our LCDHD case data and compared deaths with vaccination status; fully vaccinated individuals received 2 doses of an mRNA vaccine (Moderna or Pfizer) or one dose of Johnson and Johnson vaccine.

The table below shows the results of the number of deaths between January 1, 2021 and February 26, 2022 when the analysis was done.

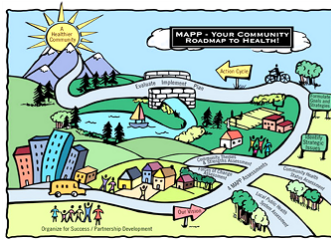
Mortality Data and Vaccination Status

	Fully	Partially	Un-vaccinated	Total		% Unvaccinated	% Partially & Unvaccinated
Adair	9	2	44	55		80	84
Casey	9	2	32	43		73	79
Clinton	4	2	19	25		76	84
Cumb	4	2	15	21		72	81
Green	1	1	22	24		92	96
McCreary	3	3	56	62		90	95
Pulaski	21	5	170	196		87	89
Russell	6	0	42	48		87	88
Taylor	14	7	67	88		76	84
Wayne	7	0	59	66		89	89
TOTAL	78	22	526	628		84	87

Mortality from Covid was much higher in the unvaccinated than fully vaccinated; 87% of deaths in the Lake Cumberland region occurred in the unvaccinated or partially vaccinated. By county it varied from 79%- 96%.

Vaccines are not 100% effective, but there is no doubt that they prevent severe disease and death. The BA.2 Omicron variant, which caused a resurgence of Covid in Europe is now gaining ground in the US with several states seeing a steep rise. Recent vaccination and/or booster doses have been shown to be protective even for this variant. Furthermore, vaccination has shown better protection for BA.4 and BA.5, new Omicron variants surging in South Africa, than from previous Omicron infection. There is plenty of vaccine available in the community, including at the health departments and it is time to be vaccinated before the next surge. For more details on vaccines visit <https://www.lcdhd.org/2021/03/21/how-covid-19-vaccines-work/>.

APPENDIX A: MAPP ASSESSMENTS



Community Health Status Assessment (CHSA) Survey Monkey

Between November 2017 and November 2018, 5,356 community members across the ten counties completed a Community Health Assessment Survey. The CHSA provides quantitative information on the health conditions of the community. The survey asked information regarding demographics, health issues, availability of services, access to care and etc.

The Community Themes and Strengths Assessment (CTSA)

The CTSA was completed in a forum, brainstorming activity where community partners and organizations were asked the following questions: (1) What is important to the community? (2) How is quality of life perceived in the community? (3) What assets/resources does the community have that will assist to improve the health of the community? This assessment assist in collecting community thoughts, experiences, opinions and concerns.

Local Public Health System Assessment (LPHSA)

The LPHSA was completed in a forum setting, where individuals were asked questions to determine how well the local public health system partners work together to deliver the 10 Essential Public Health Services. This assessment provided an opportunity for individuals and organizations to learn about new services as well as current services that area provided in the communities.

The Forces of Change Assessment (FoC)

The FoC assessment was completed as a brainstorming activity and individuals were asked the following questions: (1) What is occurring or might occur that affects the health of the community and the local public health system that is beyond our control? Considering any and all types of forces such as: social, economic, political, technological, environmental, legal or ethical.

As a result of the MAPP assessments, strategic issues were identified and the community health improvement plan was created. A summary of the MAPP assessments can be found on pages 24 - 53, as well as, the priority health issues. This information was compiled and the 2022 LCDHD Community Health Improvement Plan was created.

POPULATIONS AT HIGHER RISK

After the MAPP assessments were completed and priority health issues were selected, the participants were asked by the facilitator to reflect on the information collected and discuss the follow question:

1. Which populations in the community are, or are perceived to be, at highest risk for poor health outcomes and more likely to experience greater health inequities?

The responses are as below.

Elderly - Lack of services for this population (food assistance, transportation, specialist), lonely - not enough services for those who don't have anyone to help them, transportation lack of and cost, financially unstable, many are raising their grandchildren, lack of availability of specific doctors in rural counties; mis-use of prescriptions medication.

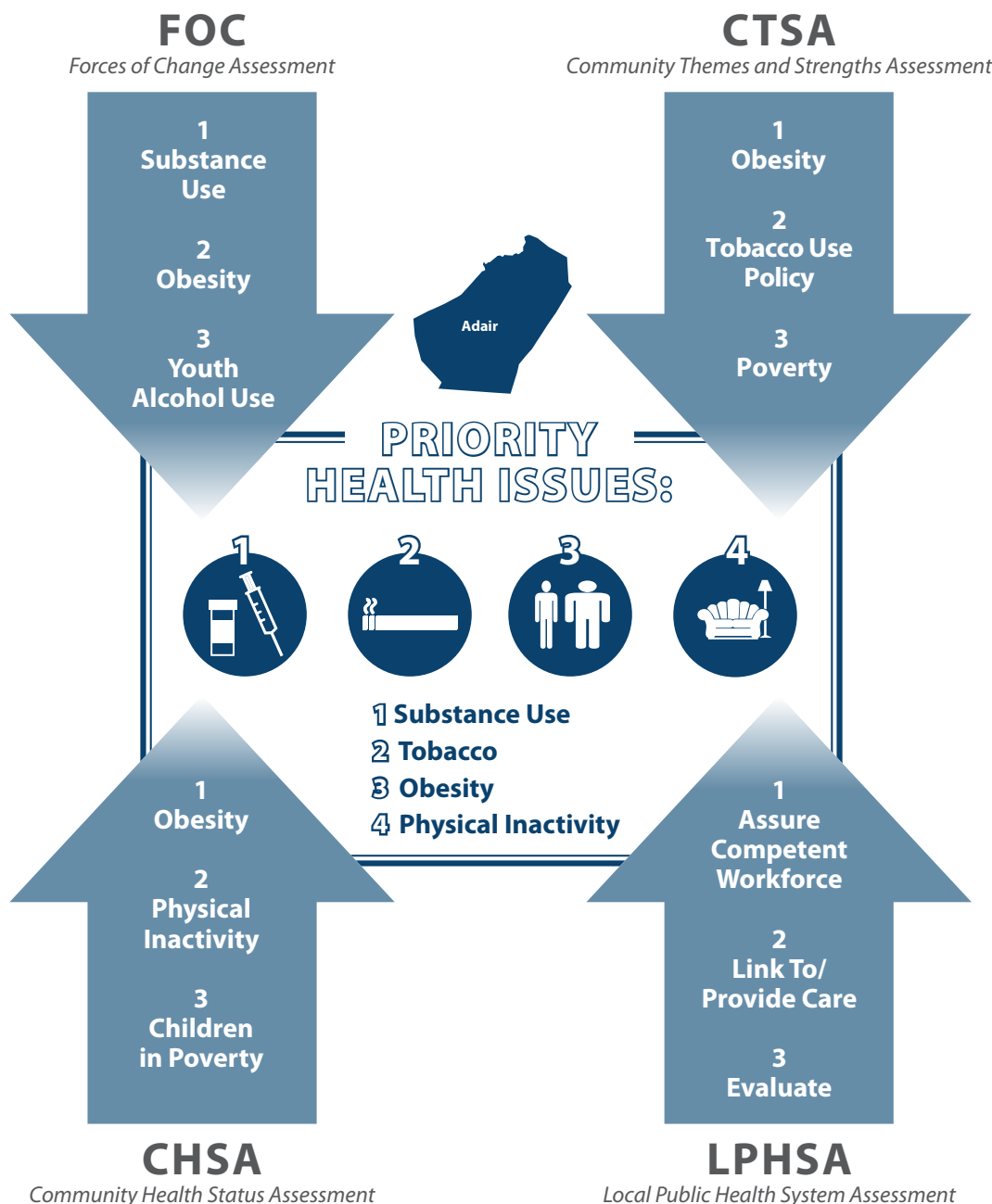
Individuals Living in Poverty – Socioeconomic conditions are social determinates of health, greater risk of chronic disease, health insurance is high so, they have no insurance and preventive care is something they are not aware of, experience greater social needs

Individuals with Substance Use Disorder - There are many people struggling with addiction, long term rehab services hard to find, very high cost of out of pocket rehab services, very few places for people who either don't have insurance or their insurance does not cover, lack of insurance for those with SUD, many of these people have had Adverse Childhood Experiences.

Under-served/Uninsured Individuals – “Working Poor” – folks struggle to pay bills, working multiple jobs, getting very little assistance, no insurance if offered due to cost,

ADAIR COUNTY

The W.A.T.C.H Coalition completed the Mobilizing for Action through Partnerships and Planning (MAPP), a community driven strategic planning tool in Spring 2018. Through the four assessments of this process, the following themes were identified as areas to research and determine strategies to improve the health outcomes of Adair County residents.



ADAIR COUNTY

The Adair County W.A.T.C.H. Coalition completed the Mobilizing for Action through Partnerships and Planning (MAPP), a community driven strategic planning tool in Spring 2018.

Adair County W.A.T.C.H. Coalition Vision Statement:

Adair County is an educated, productive, community united and empowered to create and access opportunities and resources to achieve a healthy lifestyle.



ADULT OBESITY

40%

District: 37%
KY: 35%



ADULT SMOKING

27%

District: 27.8%
KY: 24%



DIABETES PREVALENCE

14%

District: 14%
KY: 13%



DRUG OVERDOSE DEATHS

17

District: 26
KY: 32



EXCESSIVE DRINKING

15%

District: 15%
KY: 17%

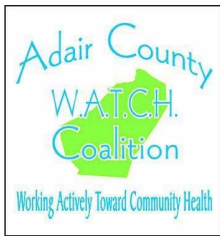


TEEN BIRTH RATE

22

District: 45
KY: 31

ADAIR COUNTY: RESOURCES OR ASSETS INVENTORY



Adair County (Working Actively Toward Community Health) W.A.T.C.H. Coalition

The priority health issues selected are Obesity/Physical Inactivity, Substance Use and Tobacco Use. To address these issues the health coalition has created a listing of assets and resources that will be employed to improve the health of Adair County residents.

Obesity/Physical Inactivity

- Jim Blair Community Center - outside walking track with story walk playground, ball field
- Adair County School System - open campus for walkers/runners with lighting
- Columbia City Park - basketball court, tennis court, handicap accessible playground
- Holloway Health and Wellness Center - membership required
- Flex Appeal Fitness - paid membership
- Healthy Kids Clinic
- Adair County Cooperative Extension Service - health and wellness focused classes
- Little League Park-after school leagues with fees
- Adair Farmers Market - Kids Bucks, Hungry Kids Café, weekly educational programs
- Adair County WATCH Coalition - support community efforts
- Diabetes Education -gentle chair exercise
- Food Pantry
- KY Trail Town
- Family Resource/YSC/21st Century After School grants

Substance Use

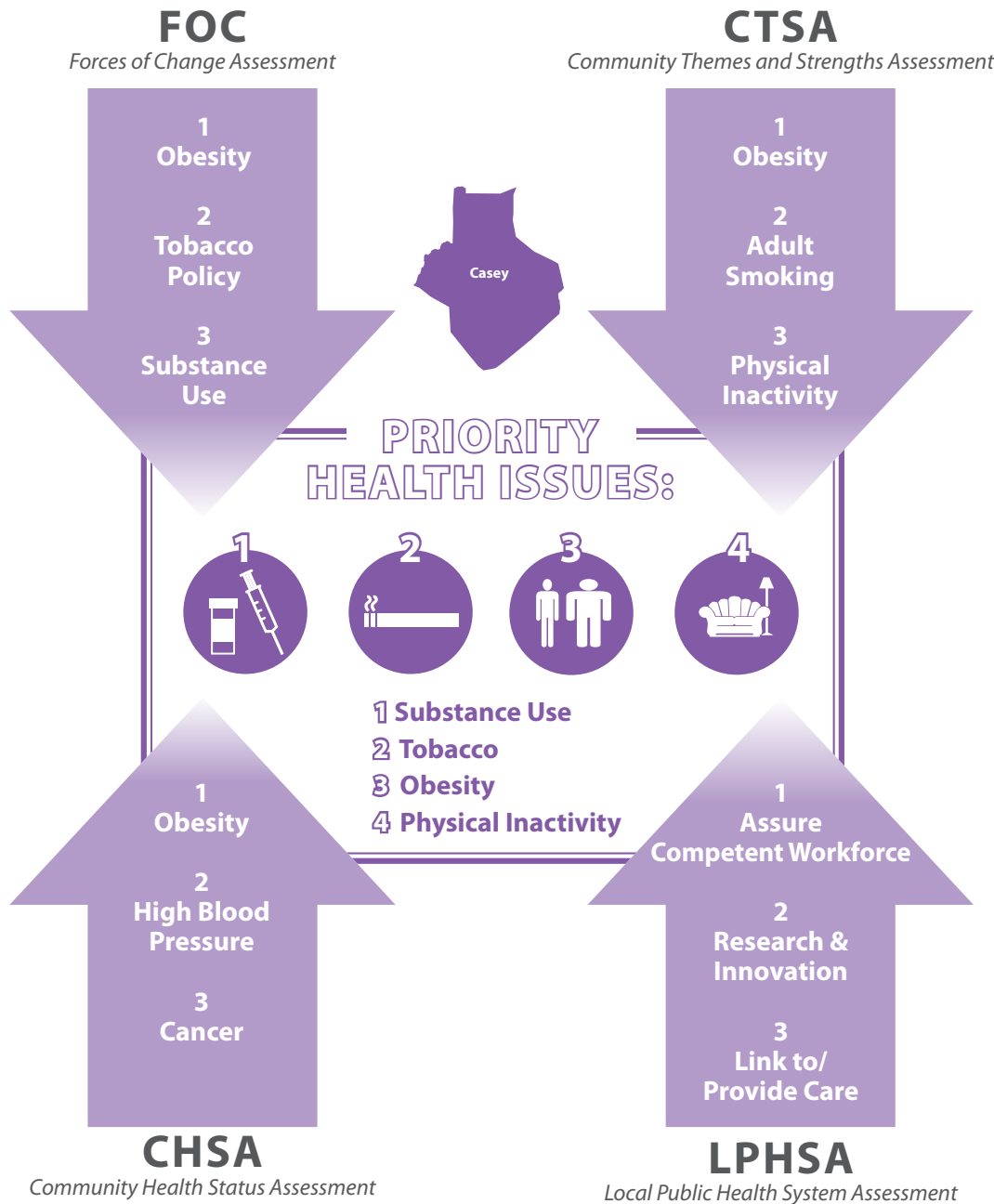
- Health Department community training on ACEs
- Victim Advocate
- Lake Cumberland Community Action Agency
- HANDS
- ADANTA
- Adair County ASAP Programs
- Celebrate Recovery
- Lindsey Wilson College Counseling Program
- LCDHD RHOP, Syringe Exchange, Ryan White Program
- Joy Ministries

Tobacco

- LCDHD Tobacco grant working with youth
- LCDHD Quit line promotion
- Adair County ASAP
- Middle and High School Youth Coalitions
- Adair County Schools Sources of Strength
- ADANTA RPC
- Family Resource Center/YSC

CASEY COUNTY

The Casey Health Empowerment Coalition (CHEC) completed the Mobilizing for Action Through Partnerships and Planning (MAPP), a community driven strategic planning tool in Spring 2018. Through the four assessments of this process, the following themes were identified as areas to research and determine strategies to improve the health outcomes of Casey County residents.



CASEY COUNTY

The Casey Health Empowerment Coalition (CHEC) completed the Mobilizing for Action through Partnerships and Planning (MAPP), a community driven strategic planning tool in Spring 2018.

Casey Health Empowerment Coalition (CHEC) Vision Statement:

Casey County will be a united community focusing on active, healthy lifestyles free of drugs, violence and tobacco.



ADULT OBESITY

29%

District: 37%
KY: 35%



ADULT SMOKING

29%

District: 27.8%
KY: 24%



DIABETES PREVALENCE

14%

District: 14%
KY: 13%



DRUG OVERDOSE DEATHS

36

District: 26
KY: 32



EXCESSIVE DRINKING

15%

District: 15%
KY: 17%



TEEN BIRTH RATE

48

District: 45
KY: 31

CASEY COUNTY: RESOURCES OR ASSETS INVENTORY



Casey County Community Health Empowerment Coalition (CHEC)

The priority health issues selected are Substance/Tobacco Use and Physical Inactivity/Obesity. To address these issues the health coalition has created a listing of assets and resources that will be employed to improve the health of Casey County residents.

Substance Use/Tobacco

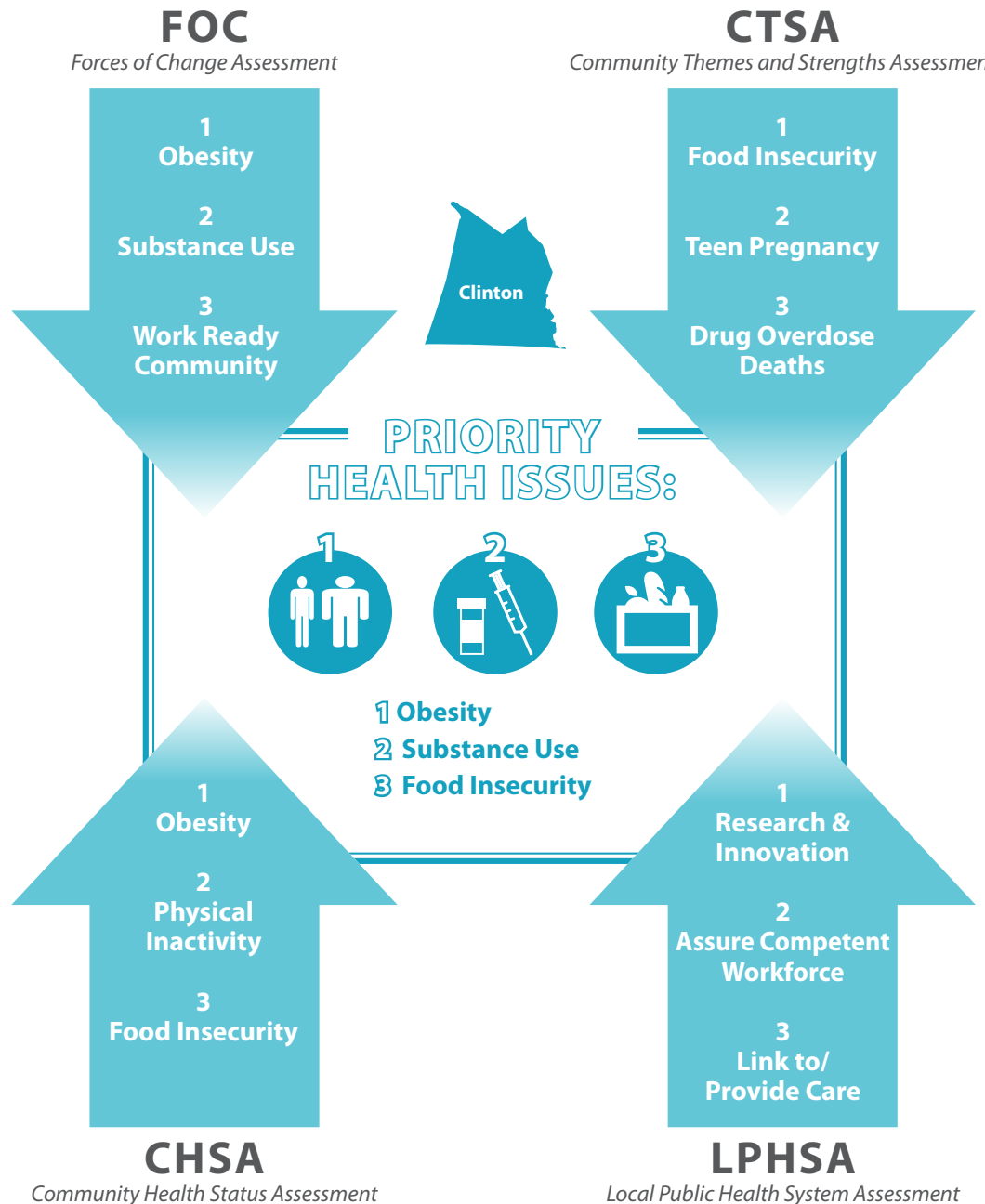
- ADANTA
- Casey County Health Empowerment Coalition
- Casey County ASAP
- Drug Free Community Grant
- LCDHD Quitline Promotion
- LCDHD Freedom From Smoking Classes
- Healthy Kids Clinic
- Family Resource /YSC
- LCDHD RHOP / Ryan White
- Health Department community training on ACEs
- LCDHD Teen Pregnancy Prevention Grant
- Liberty Ranch: Alcohol and Drug Recovery Home

Physical Inactivity/Obesity

- Casey Health Empowerment Coalition
- UK Extension Programs / 4-H
- Casey County School System - multiple grants
- Healthy Kids Clinic
- Family Resource / YSC / 21st Century Grants afterschool
- Farmers Market
- Liberty Crossing
- Veterans Park
- Central KY AG/Expo Center
- Gateway Park
- Little League Programs -paid
- Mission Fit Gym - membership
- Casey County Explorers walking club

CLINTON COUNTY

The Clinton County Health Coalition completed the Mobilizing for Action through Partnerships and Planning (MAPP), a community driven strategic planning tool in Spring 2018. Through the four assessments of this process, the following themes were identified as areas to research and determine strategies to improve the health outcomes of Clinton County residents.



CLINTON COUNTY

The Clinton County Health Coalition completed the Mobilizing for Action through Partnerships and Planning (MAPP), a community driven strategic planning tool in Spring 2018.

Clinton County Health Coalition Vision Statement:

Improving the overall health and quality of life of the Clinton County population by teaching individual's responsibility, providing education, wellness opportunities, and allocating resources throughout the community.



PRIORITY HEALTH ISSUES:



- 1 Obesity
- 2 Substance Use
- 3 Food Insecurity



ADULT OBESITY

38%

District: 37%
KY: 35%



ADULT SMOKING

30%

District: 27.8%
KY: 24%



DIABETES PREVALENCE

12%

District: 14%
KY: 13%



DRUG OVERDOSE DEATHS

n/a

District: 26
KY: 32



EXCESSIVE DRINKING

14%

District: 15%
KY: 17%



TEEN BIRTH RATE

49

District: 45
KY: 31

CLINTON COUNTY: RESOURCES OR ASSETS INVENTORY

Clinton County Health Coalition

The priority health issues selected are Obesity, Substance Abuse and Food Insecurity. To address these issues the health coalition has created a listing of assets and resources that will be employed to improve the health of Clinton County residents.

Obesity

- Mountain View Park - walking trail, basketball goals, play equipment
- Clinton County Public Library - health and wellness focused classes, walking club
- Clinton County Schools-Family Resource Center - exercise programs
- Clinton County Cooperative Extension Service - health and wellness focused classes
- Twin Lakes Family Wellness Center - exercise equipment, exercise classes, swimming
- Clinton County Senior Center - fitness program for elderly
- Medical Center of Albany - health Care
- Clearfork Baptist Church - walking trail
- Albany Elementary School - walking trail for students
- Health Department - WIC, nutrition education

Substance Abuse

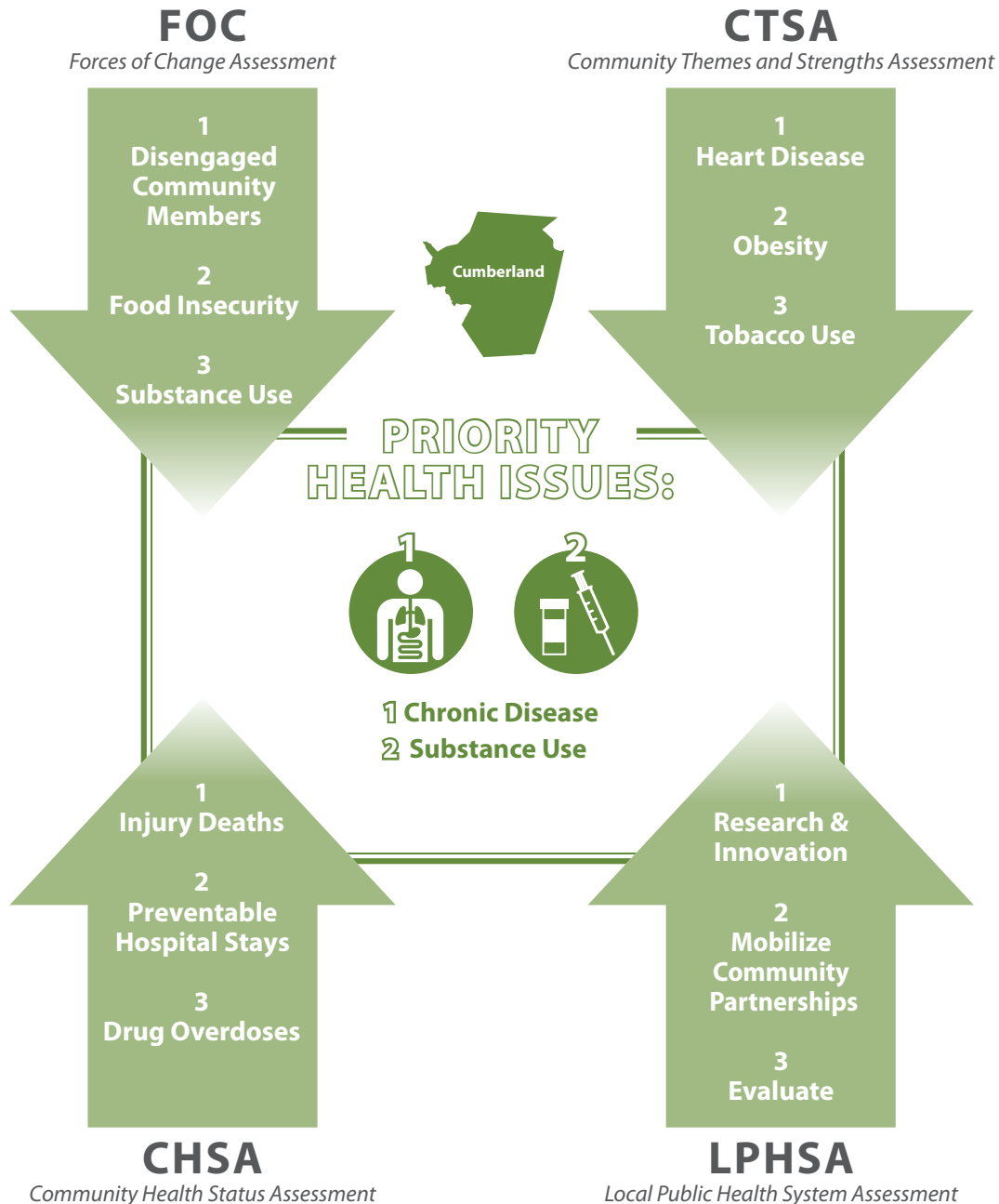
- ADANTA programs - counseling, prevention, treatment
- Clinton County ASAP programs - prevention and treatment, raise awareness,
- Health Department - Freedom From Smoking classes
- Clinton County Resource Directory - various treatment options
- AA and NA - Substance Use Support programs
- Community Based Interventions - counseling, prevention, treatment
- Passages of Kentucky - drug treatment (outpatient)

Food Insecurity

- Farmers Market - local produce
- Days of Grace Food Pantry - food pantry (free food weekly)
- Home Health Agencies - elderly meal support
- Migrant Program - provide food
- Ministerial Program - food Pantry and help with food when needed
- LCCA - emergency food when needed

CUMBERLAND COUNTY

The Cumberland County Health Coalition completed the Mobilizing for Action through Partnerships and Planning (MAPP), a community driven strategic planning tool in Spring 2018. Through the four assessments of this process, the following themes were identified as areas to research and determine strategies to improve the health outcomes of Cumberland County residents.



CUMBERLAND COUNTY

The Cumberland County Health Coalition completed the Mobilizing for Action through Partnerships and Planning (MAPP), a community driven strategic planning tool in Spring 2018.

Cumberland County Health Coalition Vision Statement:

To enhance the physical, emotional, and spiritual health of all those who live, work and play in Cumberland County now and for generations to come.



PRIORITY HEALTH ISSUES:



1 Chronic Disease



2 Substance Use



ADULT OBESITY

34%

District: 37%
KY: 35%



ADULT SMOKING

27%

District: 27.8%
KY: 24%



DIABETES PREVALENCE

13%

District: 14%
KY: 13%



DRUG OVERDOSE DEATHS

n/a

District: 26
KY: 32



EXCESSIVE DRINKING

15%

District: 15%
KY: 17%



TEEN BIRTH RATE

45

District: 45
KY: 31

CUMBERLAND COUNTY: RESOURCES OR ASSETS INVENTORY



Cumberland County Health Coalition

The priority health issues selected are Chronic Disease and Substance Use and Abuse. To address these issues the health coalition has created a listing of assets and resources that will be employed to improve the health of Cumberland County residents.

Chronic Disease

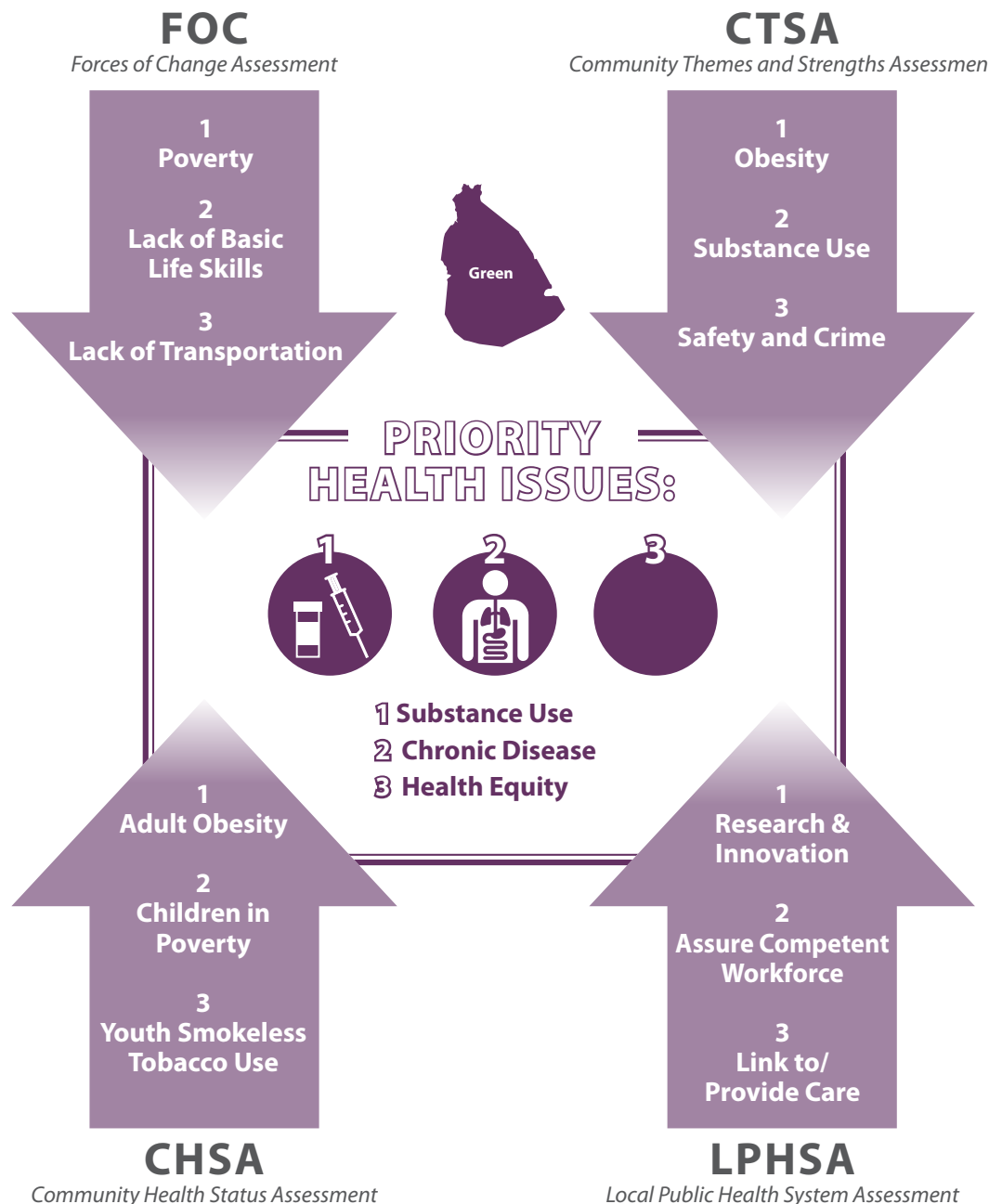
- Tobacco Free School campus
- Veterans Center exercise facility
- Cumberland County Cooperative Extension Service
- (2) Farmers' Markets
- Cumberland County Health Department-Health Promotion and Policy, Wellness and Outreach, WIC
- Cumberland County Hospital
- Feed My Sheep Pantry
- The Mighty Cumberland River Run
- Southern KY Softball Tournament
- Mayor's goal of establishing a wellness center
- Dr. Joseph Schickel Veterans Memorial Park
- Hill Top Park
- Lake Cumberland Community Action Agency
- City of Burkesville walkability
- Dale Hollow Lake State Park
- Salem Park
- Marrowbone Park
- Dog House Gym
- Cumberland Family Medical

Substance Use and Abuse

- Tobacco Free School campus
- Cumberland County Agency for Substance Abuse Policy Board
- ADANTA
- ADANTA Regional Prevention Center
- Family Resource Youth Service Center
- Public forums
- Burkesville City Police
- Cumberland County EMS
- AA Meetings
- Celebrate Recovery – Centerpoint Nazarene Church
- CBI- Community Based Interventions

GREEN COUNTY

The Green County Health and Wellness Coalition completed the Mobilizing for Action through Partnerships and Planning (MAPP), a community driven strategic planning tool in Spring 2018. Through the four assessments of this process, the following themes were identified as areas to research and determine strategies to improve the health outcomes of Green County residents.



GREEN COUNTY

The Green County Health & Wellness Coalition completed the Mobilizing for Action through Partnerships and Planning (MAPP), a community driven strategic planning tool in Spring 2018.

Green County Health & Wellness Coalition Vision Statement:

All citizens united to provide a healthier tomorrow by focusing on one another to promote better lifestyle choices, education, resources and a safe environment for all who live work and play in Green County.



PRIORITY HEALTH ISSUES:



- 1 Substance Use
- 2 Chronic Disease
- 3 Health Equity



ADULT OBESITY

36%

District: 37%
KY: 35%



ADULT SMOKING

28%

District: 27.8%
KY: 24%



DIABETES PREVALENCE

13%

District: 14%
KY: 13%



DRUG OVERDOSE DEATHS

n/a

District: 26
KY: 32



EXCESSIVE DRINKING

15%

District: 15%
KY: 17%



TEEN BIRTH RATE

43

District: 45
KY: 31

GREEN COUNTY: RESOURCES OR ASSETS INVENTORY



Green County Health & Wellness Coalition

The priority health issues selected are Obesity, Substance Use and Health Inequities. To address these issues the health coalition has created a listing of assets and resources that will be employed to improve the health of Green County residents.

Obesity

- **American Legion Park** - exercise facilities
- **Green County Public Library** - health and wellness focused classes, walking club
- **Find Your Fit** - exercise classes
- **Wyatt Jeffries Woods** - hiking trail
- **Green County Schools-Family Resource Center** - Lunch and Learn program, exercise programs
- **Healthy Kids Clinic**
- **Green County Cooperative Extension Service** - health and wellness focused classes
- **GoNoodle** in the schools

Substance Use

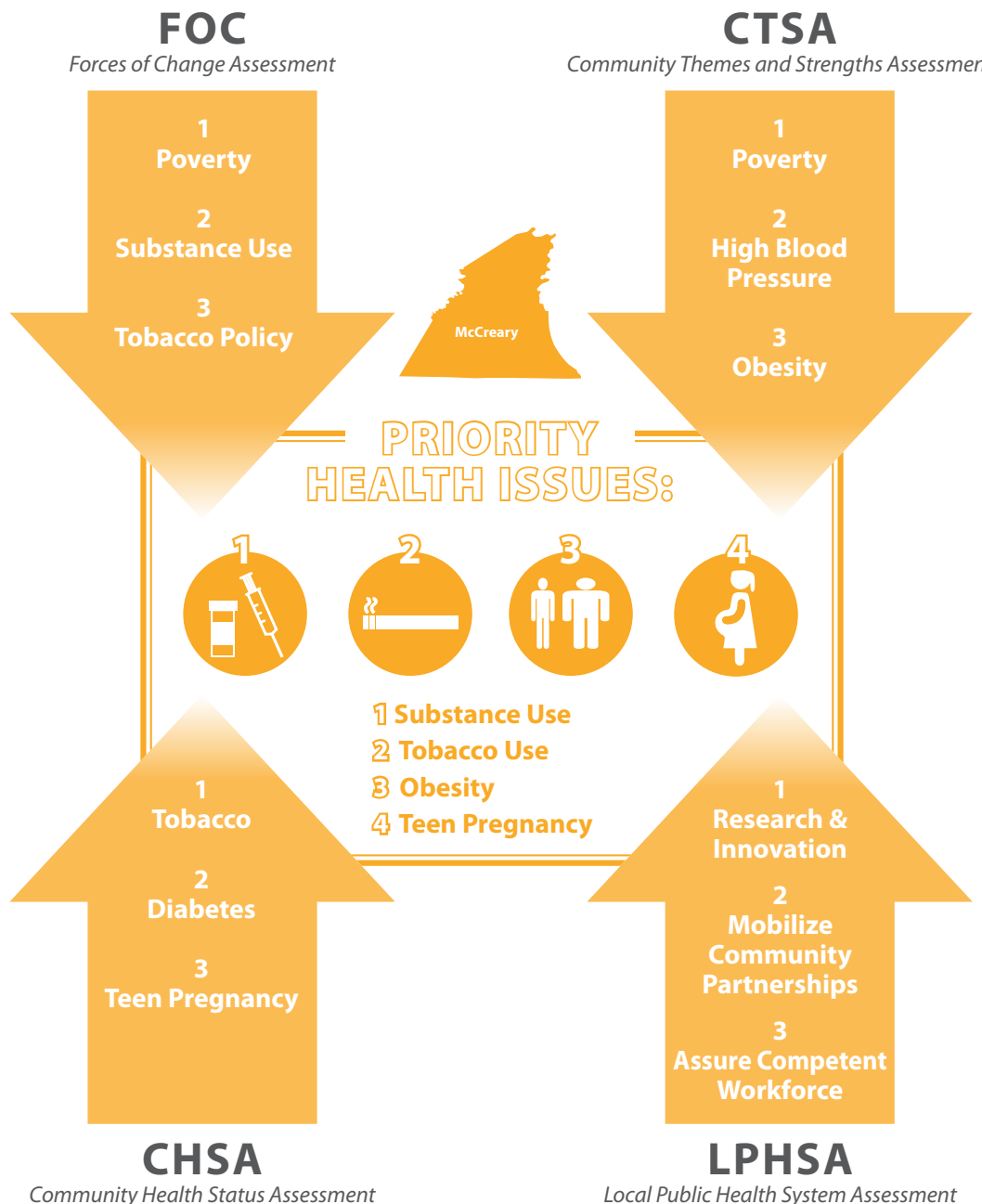
- **ADANTA** programs
- **Green County ASAP** programs
- **Freedom from Smoking** classes
- **Green County Resource Directory**
- **AA** program

Health Inequities

- **Health Department** community training on ACEs
- **Victim Advocate**
- **Lake Cumberland Community Action Agency**
- **HANDS**

McCREARY COUNTY

The McCreary County Health Coalition completed the Mobilizing for Action through Partnerships and Planning (MAPP), a community driven strategic planning tool in Spring 2018. Through the four assessments of this process, the following themes were identified as areas to research and determine strategies to improve the health outcomes of McCreary County residents.



McCREARY COUNTY

The McCreary County Health Coalition completed the Mobilizing for Action through Partnerships and Planning (MAPP), a community driven strategic planning tool in Spring 2018.

McCreary County Health Coalition Vision Statement:

All citizens empowered to build a safe, healthy and drug free community with education and leading by example.



ADULT OBESITY

38%

District: 37%
KY: 35%



ADULT SMOKING

33%

District: 27.8%
KY: 24%



DIABETES PREVALENCE

17%

District: 14%
KY: 13%



DRUG OVERDOSE DEATHS

n/a

District: 26
KY: 32



EXCESSIVE DRINKING

12%

District: 15%
KY: 17%



TEEN BIRTH RATE

60

District: 45
KY: 31

MCCREARY COUNTY: RESOURCES OR ASSETS INVENTORY

McCreary County Health and Wellness Coalition

The priority health issues selected are Substance Use, Tobacco Use, Obesity and Teen Pregnancy. To address these issues the health coalition has created a listing of assets and resources that will be employed to improve the health of McCreary County residents.

Substance Use

- **ADANTA** - substance use counseling, outpatient treatment
- **Operation UNITE** - educational programs, funds some treatments
- **Celebrate Recovery** - support for addicts and families
- **Kentucky Moms** - case management
- **Champions** - educational programs
- **ASAP** - education, some treatments
- **Syringe exchange** - harm reduction
- **Schools** - implementing evidence based educational programs

Tobacco Use

- **Operation UNITE** - educational programs
- **KY Quit Line** - outpatient cessation programs
- **Health Department** - educational programs, cessation programs
- **ASAP** - assist with NRT products
- **Schools** - tobacco free, implementing evidence based educational programs
- **Health Coalition** - advocates for smoke free initiatives and activities

Obesity

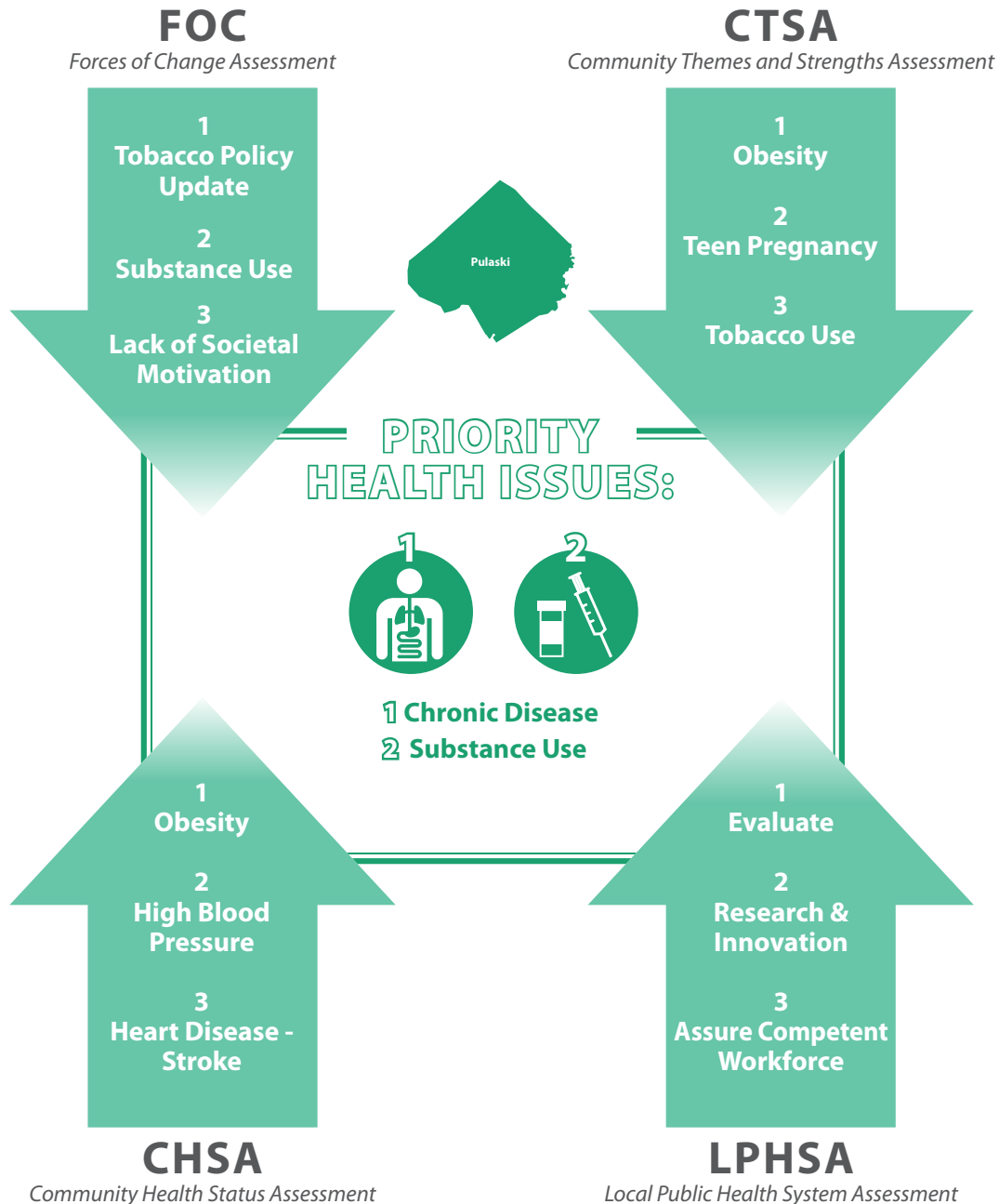
- **Kristina's Kitchen** - cooking classes
- **Extension Office** - cooking classes, 4H program
- **Get Healthy McCreary County** - hiking and walking
- **McCreary County Park** - walking trails, basketball courts, family fun activities, sporting activities
- **The Lords Gym** - baseball fields, indoor basketball courts
- **Certified Trail Town**
- **Dyna Body**
- **McCreary County Tumble & Cheer**
- **Fitness Edge by Thrive**

Teen Pregnancy

- **Schools** - Youth Service Centers, evidence-based education in the schools
- **KY Moms**
- **Baby Steps** - church group
- **Health Department** - pregnancy tests, HANDS

PULASKI COUNTY

The Pulaski County Working on Wellness (WOW) Coalition completed the Mobilizing for Action through Partnerships and Planning (MAPP), a community driven strategic planning tool in Spring 2018. Through the four assessments of this process, the following themes were identified as areas to research and determine strategies to improve the health outcomes of Pulaski County residents.



PULASKI COUNTY

The Pulaski County Working on Wellness (WOW) Coalition completed the Mobilizing for Action through Partnerships and Planning (MAPP), a community driven strategic planning tool in Spring 2018.

Pulaski County Working on Wellness (WOW) Coalition Vision Statement:

A more livable Pulaski County through both personal and shared responsibility, for the overall health and well-being of our community.



PRIORITY HEALTH ISSUES:



1 Chronic Disease



2 Substance Use



ADULT OBESITY

39%

District: 37%
KY: 35%



ADULT SMOKING

24%

District: 27.8%
KY: 24%



DIABETES PREVALENCE

15%

District: 14%
KY: 13%



DRUG OVERDOSE DEATHS

21

District: 26
KY: 32



EXCESSIVE DRINKING

15%

District: 15%
KY: 17%



TEEN BIRTH RATE

42

District: 45
KY: 31

PULASKI COUNTY: RESOURCES OR ASSETS INVENTORY



Pulaski County (Working on Wellness) WOW Coalition

The priority health issues selected are Chronic Disease and Substance Use. To address these issues the health coalition has created a listing of assets and resources that will be employed to improve the health of Pulaski County residents

Chronic Disease

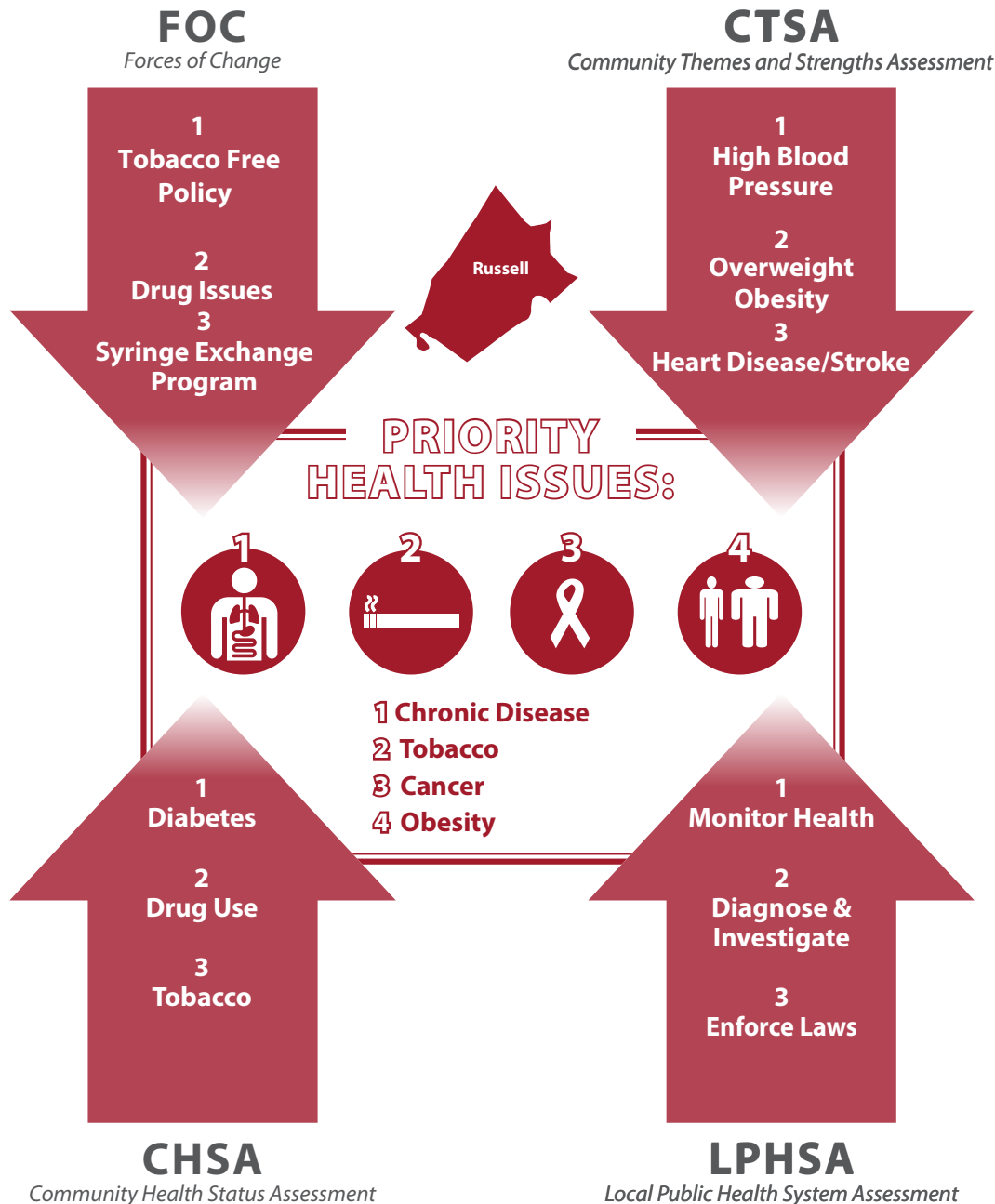
- Center for Rural Development - Health Fairs/Events
- Children's Botanical Garden
- Health Department nutrition events
- Farmers Markets
- Fishing Creek Recreational Area
- Health Department diabetes education classes
- Kentucky Cancer Program
- Pulaski County Cooperative Extension Service - health and wellness focused classes
- Pulaski County Government Park & Recreation Areas
- Pulaski County Public Library - health and wellness classes
- Pulaski County Working on Wellness (WOW) Coalition
- Pulaski County, Somerset Independent, and Science Hill Schools FRYSC health programs
- City of Somerset - Recreational Facilities (Rocky Hollow Recreation Area, SomerSplash Water Park, SomerSport Park)
- Sierra Club - hiking
- Journey to Fitness walk/run series
- Phoenix Racing

Substance Use

- Adanta Community Health Center
- Celebrate Recovery
- UNITE Coalition
- Pulaski County ASAP programs
- Freedom from Smoking Classes
- Quit Now Hotline
- AA programs
- Bethany House Abuse Shelter
- Sky Hope Center
- Syringe Exchange

RUSSELL COUNTY

The Russell County Health and Wellness Coalition completed the Mobilizing for Action through Partnerships and Planning (MAPP), a community driven strategic planning tool in Spring 2018. Through the four assessments of this process, the following themes were identified as areas to research and determine strategies to improve the health outcomes of Russell County residents.

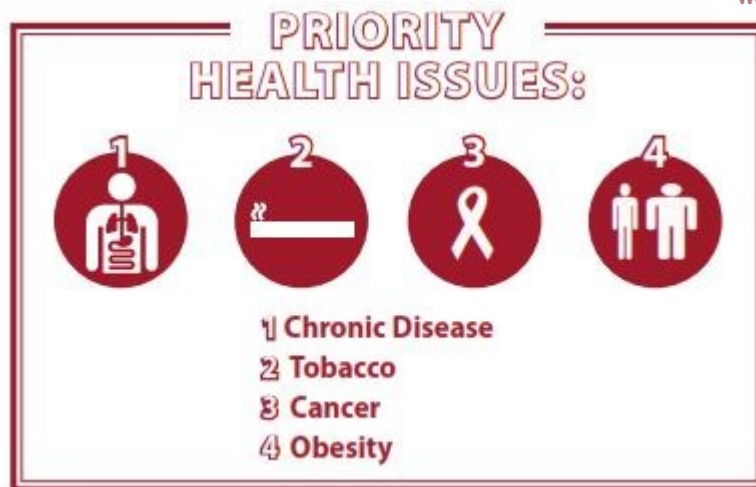


RUSSELL COUNTY

The Russell County Health & Wellness Coalition completed the Mobilizing for Action through Partnerships and Planning (MAPP), a community driven strategic planning tool in Spring 2018.

Russell County Health & Wellness Coalition Vision Statement:

Russell County is a united community focusing on spiritual, emotional, mental, physical and economic health that empowers personal responsibility with the support of local partners and resources to make it a safe place to live, work, and play.



ADULT OBESITY

35%

District: 37%
KY: 35%



ADULT SMOKING

27%

District: 27.8%
KY: 24%



DIABETES PREVALENCE

15%

District: 14%
KY: 13%



DRUG OVERDOSE DEATHS

34

District: 26
KY: 32



EXCESSIVE DRINKING

14%

District: 15%
KY: 17%



TEEN BIRTH RATE

50

District: 45
KY: 31

RUSSELL COUNTY: RESOURCES OR ASSETS INVENTORY



Russell County Health and Wellness Coalition

The priority health issues selected are Substance Use, Diabetes, Teen Pregnancy. To address these issues the health coalition has created a listing of assets and resources that will be employed to improve the health of Russell County residents.

Chronic Disease

- **Russell County Public Library** - Preventive educational programs
- **Russell County Law Enforcement** - drug prevention
- **Aceta Better Health** - Educational Programs focusing on youth
- **Partners in Prevention** - support of community tobacco prevention
- **Russell County Hospital** - Freedom from Smoking- Drug Program
- **Russell County Resource Directory**
- **Russell County ASAP program**
- **Russell County Health and Wellness Coalition**
- **Regional Prevention Center of ADANTA**
- **Celebrate Recovery/Breakaway Project**

Diabetes

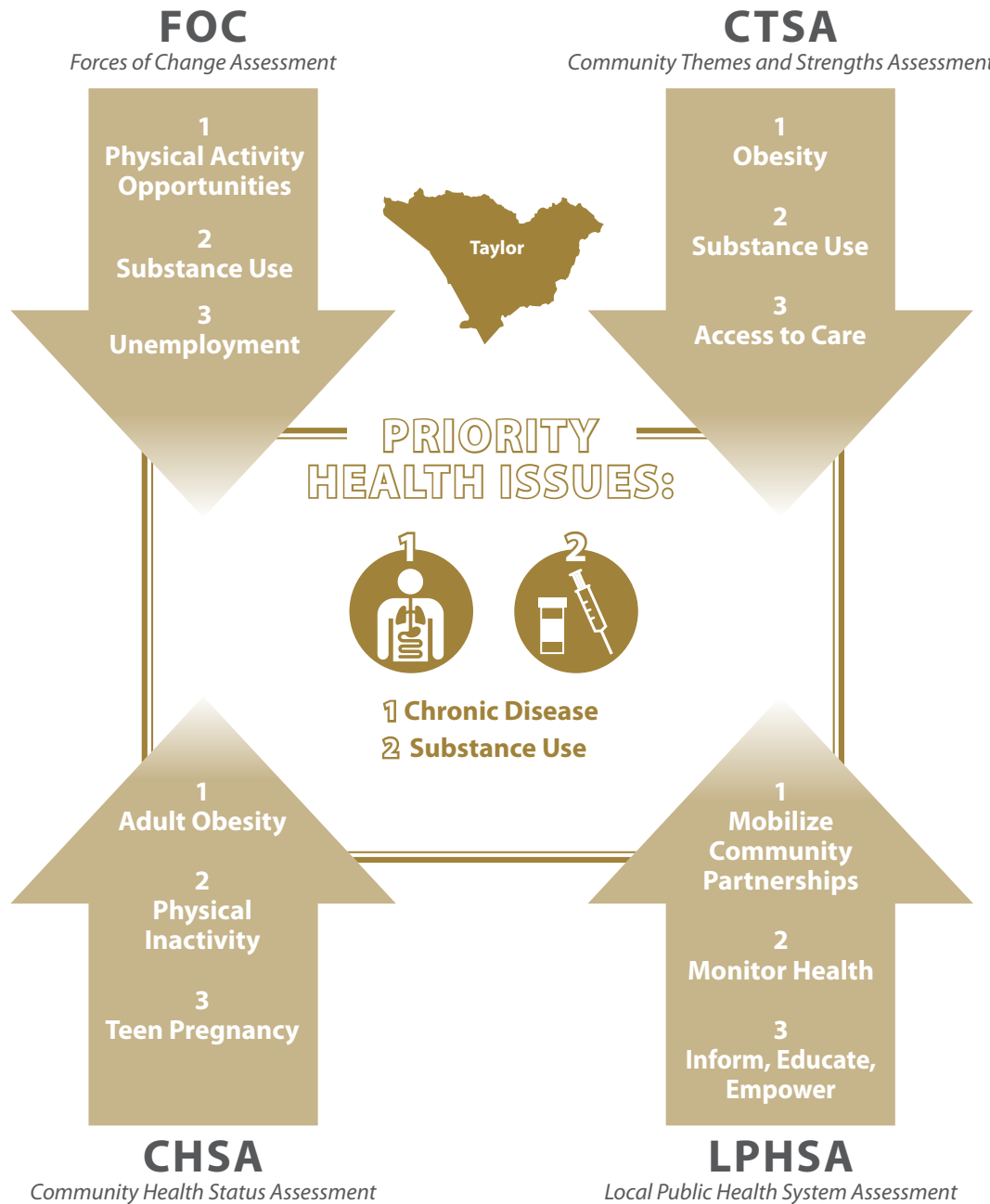
- **LCDHD Diabetes program**
- **Friends of Wolf Creek National Fish Hatchery**
- **Russell County Hospital**
- **Russell County Extension**
- **Russell County Youth Service Center** - Longest Day of Play
- **Health Education/Diabetes Education** - Development of Facebook Page

Teen Pregnancy

- **ACE's Program**
- **United Methodist Church** - Youth program
- **LCDHD - RTR, TOPS**
- **Russell County Schools**

TAYLOR COUNTY

The Taylor County Wellness Coalition completed the Mobilizing for Action through Partnership and Planning (MAPP), a community driven strategic planning tool in January 2019. Through the four assessments of this process, the following themes were identified as areas to research and determine strategies to improve the health outcomes of Taylor County residents.



TAYLOR COUNTY

The Taylor County Wellness Coalition completed the Mobilizing for Action through Partnerships and Planning (MAPP), a community driven strategic planning tool in Spring 2018.

Taylor County Wellness Coalition Vision Statement:

The goal of the Taylor County Wellness Coalition is to promote and coordinate all available community resources in health related activities.



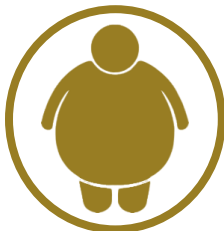
PRIORITY HEALTH ISSUES:



1 Chronic Disease



2 Substance Use



ADULT OBESITY

39%

District:
KY: 35%



DIABETES PREVALENCE

10%

District:
KY: 13%



ADULT SMOKING

25%

District:
KY: 24%



DRUG OVERDOSE DEATHS

30

District:
KY: 32



EXCESSIVE DRINKING

15%

District:
KY: 17%



ALCOHOL-IMPAIRED DRIVING DEATHS

13%

District:
KY: 25%

TAYLOR COUNTY: RESOURCES OR ASSETS INVENTORY

Taylor County Health and Wellness Coalition

The priority health issues selected are Health Disease and Stroke, Lack of Knowledge Regarding Preventive Health, Healthy Living, and Available Insurance/Financial Assistance Resources, Prevention of Chronic Disease and Recruitment and Retention of Physicians. To address these issues the health coalition has created a listing of assets and resources that will be employed to improve the health of Taylor County residents.

Heart Disease and Stroke

- Taylor County Wellness Coalition
- Freedom from Smoking classes - Taylor Regional Hospital and Taylor County Health Department
- Taylor County Farmers Market Association

Lack of Knowledge Regarding Preventive Health, Healthy Living, and Available Insurance/Financial Assistance Resources

- Kids Outdoor Day
- Taylor County Wellness Coalition
- Taylor Regional Hospital classes and programs
- Health Department diabetes education classes
- Taylor County Senior Center classes and programs
- Taylor County Public Library classes and programs
- Taylor County Cooperative Extension Service classes and programs
- Lake Cumberland Community Action Agency

Prevention of Chronic Disease

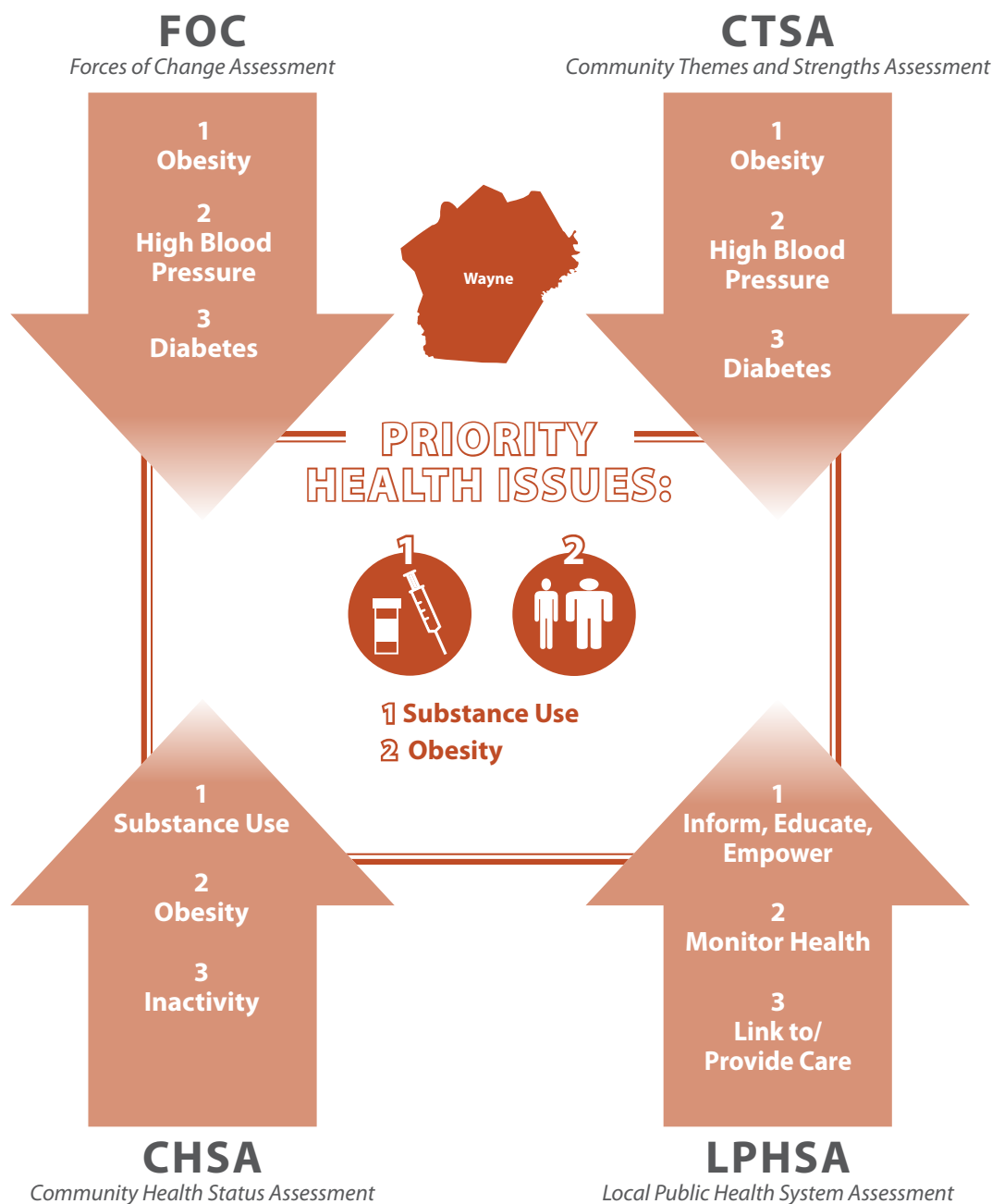
- Bicycle Friendly Campbellsville group rides and social media outlets
- Campbellsville Running Club group runs and social media outlets
- Green River Lake hiking/biking trails
- Taylor County Wellness Coalition
- Freedom from Smoking classes - Taylor Regional Hospital and Taylor County Health Department
- Paz Yoga Studio
- Various fitness facilities
- Miller Park - walking track
- Campbellsville/Taylor County Master Pedestrian Plan
- Veterans Park
- Tebbs Bend Recreational Area - hiking and biking trails
- Taylor County Farmers Market Association
- Campbellsville Baptist Church - free exercise facilities and walking track

Recruitment and Retention of Physicians

- Taylor Regional Hospital committee focuses on recruitment and retention of physicians

WAYNE COUNTY

The Wayne County Health Council completed the Mobilizing for Action Through Partnership and Planning (MAPP), a community driven strategic planning tool in Spring 2018. Through the four assessments of this process, the following themes were identified as areas to research and determine strategies to improve the health outcomes of Wayne County residents.



WAYNE COUNTY

The Wayne County Health Council completed the Mobilizing for Action through Partnerships and Planning (MAPP), a community driven strategic planning tool in Spring 2018.

Wayne County Health Council Vision Statement:

Empowering Wayne County to be a community united through personal and shared responsibility, with a focus on spiritual, emotional, mental, physical, and economic health with the support of local resources to make it a safe place to live, work, and play.



PRIORITY HEALTH ISSUES:



1 Substance Use



2 Obesity



ADULT OBESITY

42%

District: 37%
KY: 35%



ADULT SMOKING

28%

District: 27.8%
KY: 24%



DIABETES PREVALENCE

17%

District: 14%
KY: 13%



DRUG OVERDOSE DEATHS

18

District: 26
KY: 32



EXCESSIVE DRINKING

15%

District: 15%
KY: 17%



TEEN BIRTH RATE

52

District: 45
KY: 31

WAYNE COUNTY: RESOURCES OR ASSETS INVENTORY

Wayne County Health Council

The priority health issues selected are Obesity and Substance Use. To address these issues the health coalition has created a listing of assets and resources that will be employed to improve the health of Taylor County residents.

Obesity

- **Wayne County Memorial Park** - walking trail, basketball goals, play equipment
- **Wayne County Public Library** - health and wellness focused classes, walking club
- **Wayne County Schools-Family Resource Center** - exercise programs
- **Wayne County Cooperative Extension Service** - health and wellness focused classes
- **Coordinated School Health Council** - focus on health and nutrition, fitness and wellness
- **Wayne County Fitness Center** - exercise equipment, exercise classes
- **Wayne County Senior Center** - fitness program for elderly
- **Wayne County Hospital** - physical therapy, exercise equipment
- **Health Department** - WIC, nutrition education
- **Wayne County ASPIRE** - basketball, swimming, softball, baseball

Substance Use

- **ADANTA** - counseling, prevention, treatment
- **Wayne County ASAP programs** - prevention and treatment, raise awareness,
- **Health Department** - Freedom From Smoking classes
- **Wayne County Resource Directory**
- **AA program** - Substance Use Support
- **Community Based Interventions** - counseling, prevention, treatment
- **Defensive Actions Against Drugs**
- **Hope Center** - food pantry, monthly commodity day
- **Operation UNITE** - education, prevention
- **Passages of Kentucky** - drug treatment (outpatient)
- **Rays of Hope Intervention, PLC** - drug treatment (outpatient)

APPENDIX B: 10 ESSENTIAL PUBLIC HEALTH SERVICES

The 10 Essential Public Health Services provide a framework for public health to protect and promote the health of all people in all communities.

1. Monitor health status to identify community health problems.
2. Diagnose and investigate health problems and health hazards in the community.
3. Inform, educate, and empower people about health issues.
4. Mobilize community partnerships to identify and solve health problems.
5. Develop policies and plans that support individual and community health efforts.
6. Enforce laws and regulations that protect health and ensure safety.
7. Link people to needed personal health services and assure the provision of health care when otherwise unavailable.
8. Assure a competent public health and personal health care workforce.
9. Evaluate effectiveness, accessibility, and quality of personal and population-based health services.
10. Research for new insights and innovative solutions to health problems.

