

CASEY COUNTY

Casey County is part of the Appalachian region of Kentucky. Casey County is home to the annual 'Casey County Apple Festival' and The Central KY AG Center which has several miles of hiking trails and a water crossing that connects directly to downtown Liberty. Green River flows through Casey County and is a popular attraction for kayaking and canoeing.



Casey County Judicial Center



People

The population of Casey County is 15,750. 97.2% of the population are White, 0.9% are Black and 3% are Hispanic. 19.9% are 65 or older and 28.9% are under the age of 18.



Homes

The median property value is \$77,800. The homeownership rate is 79%. 22% of the children are living in single parent homes. 37% of the children are living in poverty.



Jobs

The most common employment sectors are Manufacturing, Healthcare & Social Assistance and Retail Sales. 82% of Casey County's population drives alone to work and 42% drives further than 30 minutes.

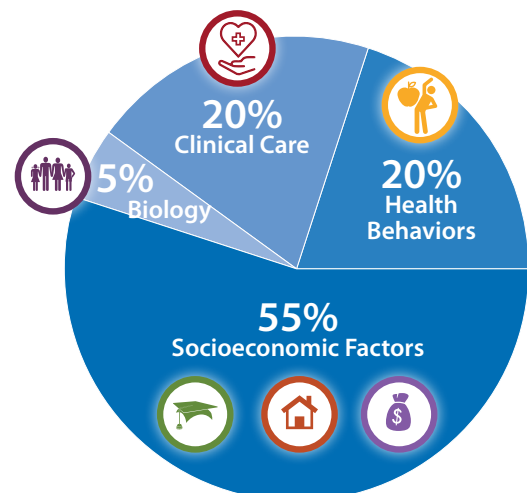


Health

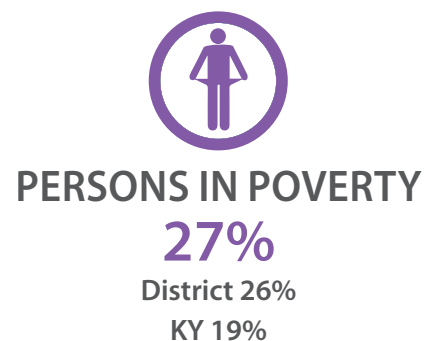
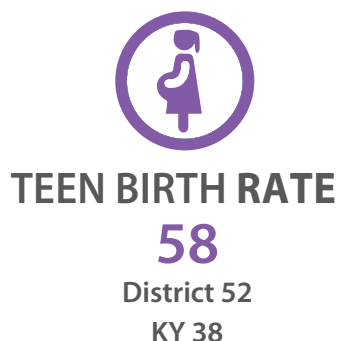
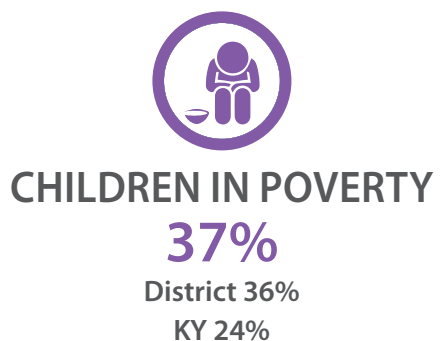
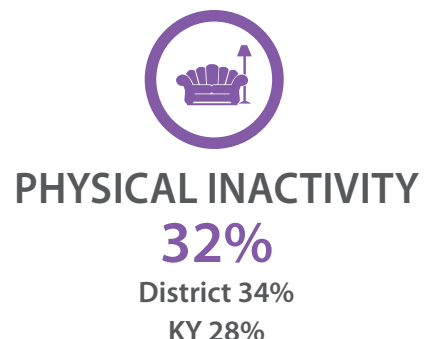
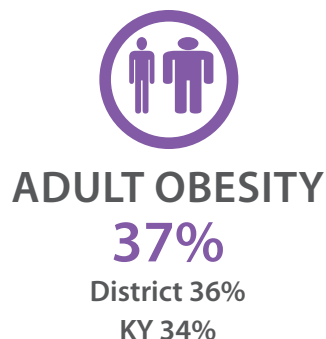
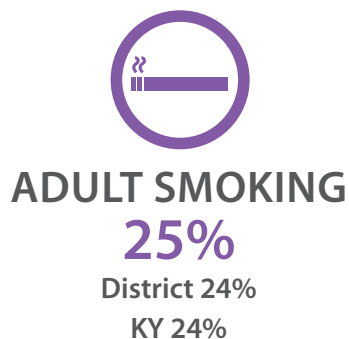
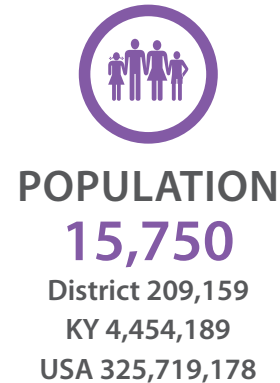
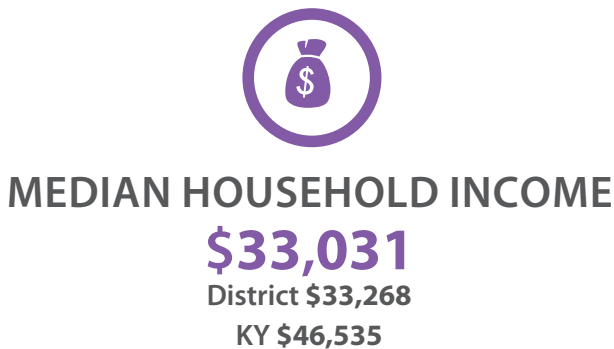
The Casey County Hospital is located in Liberty. It is a 24 bed, acute care, Critical Access Hospital (CAH) that is Joint Commission accredited. Health care provider ratios are: Primary Care Physicians 15,810:1; Dentist 7,910:1, and Mental Health Provider 1,440:1. 9% of the people under 65 are uninsured. Casey County is designated as a Medically Underserved Area/Populations (MUA/P) and Health Professional Shortage Area (HPSA).

What makes us healthy?

Many factors combine together to affect the health of individuals and communities. Whether people are healthy or not, is determined by their circumstances and environment. To a large extent, factors such as where we live, the state of our environment, genetics, our income and education level, and our relationships with friends and family all have considerable impacts on health, whereas the more commonly considered factors such as access and use of health care services often have less of an impact.



CASEY COUNTY



Casey Health Empowerment Coalition (CHEC) Vision Statement:

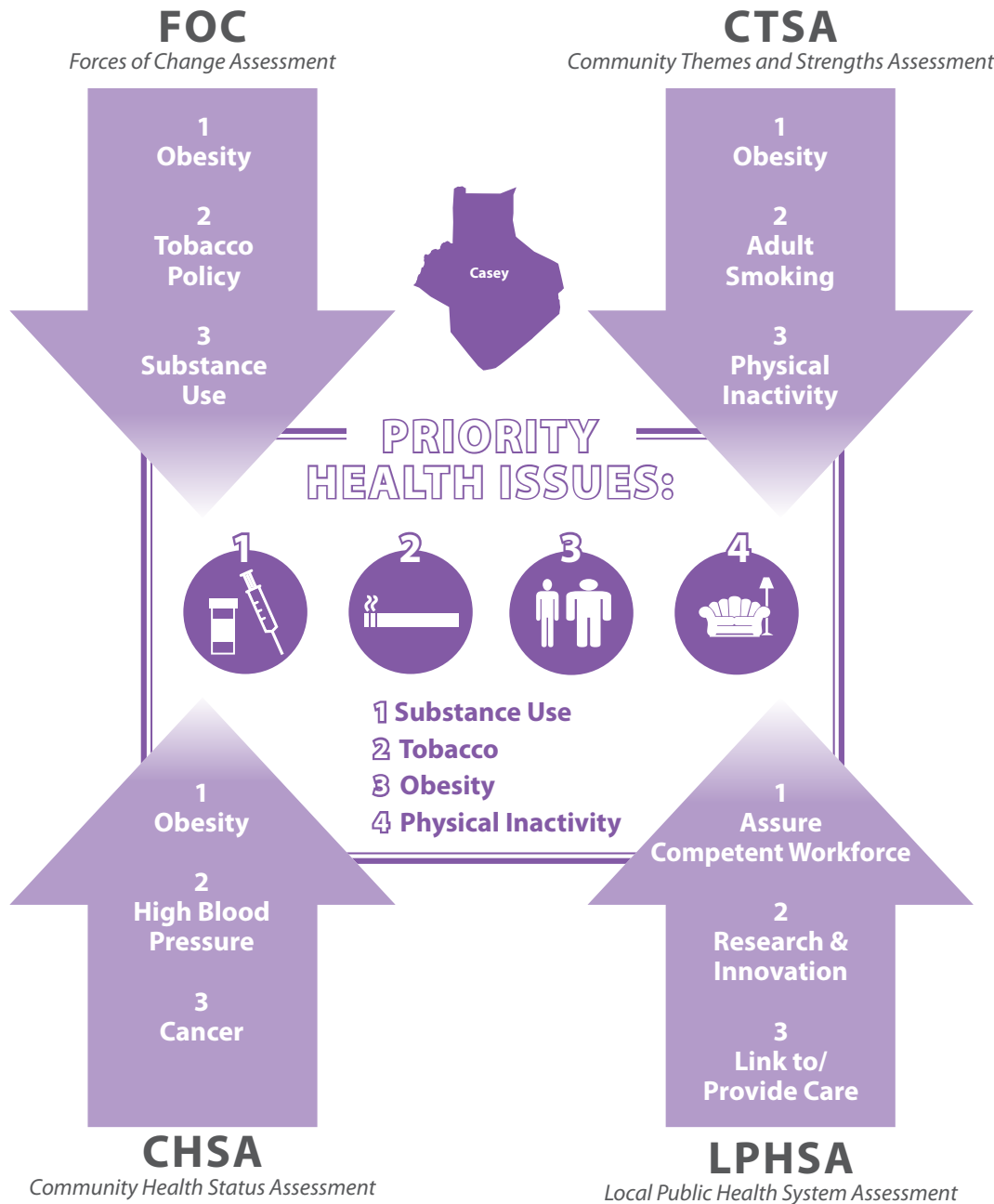
Casey County will be a united community focusing on active, healthy lifestyles free of drugs, violence and tobacco.



Sources: US Census Bureau: State and County Quick Facts, August 23, 2018. County Health Ranking, 2018.

CASEY COUNTY

The Casey Health Empowerment Coalition (CHEC) completed the Mobilizing for Action Through Partnerships and Planning (MAPP), a community driven strategic planning tool in Spring 2018. Through the four assessments of this process, the following themes were identified as areas to research and determine strategies to improve the health outcomes of Casey County residents.



CASEY COUNTY: RESOURCES OR ASSETS INVENTORY



Casey County Community Health Empowerment Coalition (CHEC)

The priority health issues selected are Substance/Tobacco Use and Physical Inactivity/Obesity. To address these issues the health coalition has created a listing of assets and resources that will be employed to improve the health of Casey County residents.

Substance Use/Tobacco

- ADANTA
- Casey County Health Empowerment Coalition
- Casey County ASAP
- Drug Free Community Grant
- LCDHD Quitline Promotion
- LCDHD Freedom From Smoking Classes
- Healthy Kids Clinic
- Family Resource /YSC
- LCDHD RHOP / Ryan White
- Health Department community training on ACEs
- LCDHD Teen Pregnancy Prevention Grant
- Liberty Ranch: Alcohol and Drug Recovery Home

Physical Inactivity/Obesity

- Casey Health Empowerment Coalition
- UK Extension Programs / 4-H
- Casey County School System - multiple grants
- Healthy Kids Clinic
- Family Resource / YSC / 21st Century Grants afterschool
- Farmers Market
- Liberty Crossing
- Veterans Park
- Central KY AG/Expo Center
- Gateway Park
- Little League Programs -paid
- Mission Fit Gym - membership
- Casey County Explorers walking club

CASEY COUNTY

Community Health Assessment DATA

POPULATION/DEMOGRAPHIC

	Casey	District	Kentucky	USA
Population, 2017 Estimate ¹	15,750	209,159	4,454,189	325,719,178
Population % Change - 04/01/10 - 07/01/17 ¹	-1.30%	0.20%	2.60%	5.50%
Person Under 5, percent (2017) ¹	6.30%	5.95%	6.20%	6.10%
Person Under 18, percent (2017) ¹	22.60%	21.82%	22.70%	22.60%
Person 65 and Over, percent (2017) ¹	19.90%	19.05%	16.00%	15.60%
Female, percent (2017) ¹	51.40%	50.28%	50.70%	50.80%
Male, percent (2017) ¹	48.60%	49.72%	49.30%	49.20%
White alone, percent (2017) ¹	97.20%	95.10%	87.80%	76.60%
Black or African American, percent (2017) ¹	0.90%	2.50%	8.40%	13.40%
American Indian/Alaska Native alone, percent (2017) ¹	0.40%	38.00%	0.30%	1.30%
Reporting two or more races, percent (2017) ¹	1.10%	1.45%	1.90%	2.70%
Hispanic or Latino, percent (2017) ¹	3.00%	2.57%	3.70%	18.10%
White alone, Not Hispanic or Latino, percent (2017) ¹	94.60%	93.06%	84.60%	60.70%
Veterans, 2012-2016 (2017) ¹	892	12,809	289,837	19,535,341
Number of Housing Units (2017) ¹	7,510	10,142	1,984,150	137,403,460
Home Ownership Rate ¹	79.00%	73.00%	66.80%	64%
Median Selected Monthly Owner Costs-w/mortgage, 2012-16 ¹	\$798	\$830	\$1,116	\$1,515
Median Selected Monthly Owner Costs-w/o mortgage, 2012-16 ¹	\$263	\$273	\$343	\$474
Median Gross Rent, 2012-16 ¹	\$481	\$525	\$690	\$982
Persons per Household, 2012-16 ¹	2.42	2.00	2.49	2.63
Median Household Income ¹	\$33,031	\$33,268	\$46,535	\$57,652
Median Homeowner Value ¹	\$77,800	\$83,210	\$135,600	\$193,500

¹Source: US Census Bureau: State and County Quick Facts, Data derived from Population Estimates, Census of Populations. August 23, 2018



CASEY COUNTY

Community Health Assessment DATA

HEALTH FACTORS

	Casey	District	Kentucky	USA
Premature Death ²	11,400	10,330	9,000	-
Poor or Fair Health ²	26%	25%	21%	-
Poor Physical Health Days ²	5.5	5.24	4.80	-
Poor Mental Health Days ²	5	4.74	4.80	-
Low Birthweight ²	9%	9%	9%	-
Adult Smoking ²	25%	24%	24%	-
Adult Obesity ²	37%	36%	34%	-
Diabetes Prevalence ²	15%	15%	13%	-
Teen Birth Rate ²	58	52	38	-
Food Environment Index ²	7.8	7.29	7.00%	-
Food Insecurity ²	15%	17%	16%	-
Physical Inactivity ²	32%	34%	28%	-
Access to Exercise Opportunities ²	26%	58%	72%	-
Excessive Drinking ²	13%	13%	16%	-
Alcohol Impaired Driving Deaths ²	43%	32%	28%	-
Uninsured ²	9%	8%	7%	-
Primary Care Physicians ²	15,810:1	3,817:1	1,510:1	-
Dentists ²	7,910:1	5,347:1	1,560:1	-
Mental Health Providers ²	1,440:1	-	520:1	-
Other Primary Care Providers ²	1,582:1	1,372:1	885:1	-
Preventable Hospital Stays, rate ²	145	106.4	77.0	-
Acute Drug Poisoning (overdose) ³	57	624	19,960	-
Drug Arrest Rate ⁴	2,297	1,868	1,707	-
Motor Vehicle Death Rate ⁵	24.21	23.98	17.06	-
Coronary Heart Disease Deaths ⁶	120.8	-	107.4	-
Colorectal Cancer (avg. 5-year cancer incidence rate) ⁷	59	54	50	40
Lung Cancer (avg. 5-year cancer incidence rate) ⁷	112	102	95	61
Breast Cancer (avg. 5-year cancer incidence rate) ⁷	115	116	123	124

²County Health Ranking, 2018. ³Kentucky Injury Prevention and Research Center 2017 Drug-related inpatient hospitalization and emergency department visits. ⁴Kentucky Health Facts, 2016. ⁵Motor Vehicle Death Rate - CDC WONDER 2016. ⁶CDC Division Heart Disease and Stroke Prevention 2014-2016.

⁷Kentucky Cancer Registry 2010-2015

CASEY COUNTY

Community Health Assessment DATA

SOCIAL AND ECONOMIC FACTORS

	Casey	District	Kentucky
High School Graduation ²	98.3%	96.9%	90.3%
Some College ²	46%	47%	60%
Unemployment ²	4.60%	6.21%	5.00%
Children in Poverty ²	37%	36%	24%
Person in Poverty ¹	27.80%	25.63%	18.50%
Income Inequality ²	5.20	5.19	5.10
Children in Single-Parent Households ²	22%	32%	35%
Social Associations ²	5.70	9.34	10.70
Violent Crime, rate ²	44	73.8	215.0
Injury Deaths, rate ²	100	103.9	88.0
Air Pollution-Particulate Matter ²	9.80	9.64	10.00
Drinking Water Violations ²	Yes	Yes	Yes
Severe Housing Problems ²	11%	14%	14%
Driving Alone to Work ²	82%	83%	82%
Long Commute-Driving Alone ²	42%	28%	29%

¹Source: US Census Bureau: State and County Quick Facts, Data derived from Population Estimates, Census of Populations. August 23, 2018

²County Health Ranking, 2018.

CASEY COUNTY SCHOOL DISTRICT ENROLLMENT

Jones Park Elementary (K-6)	351	Casey Middle (7-8)	344
Liberty Elementary (K-6)	381	Casey High (9-12)	658
Walnut Hill Elementary (K-6)	510	TOTAL ENROLLMENT	2,244

Source: Kentucky Department of Education, May 16, 2018

CASEY COUNTY COMMUNITY HEALTH SURVEY

A community health assessment survey was completed in February 2018. There were 426 individuals that completed the survey. The survey results assisted in identifying prioritizing health issues. Below are a few of the questions and answers from the survey.

What do you think are the THREE most important factors for a "Healthy Community?" (Those factors which most improve the quality of life in a community)

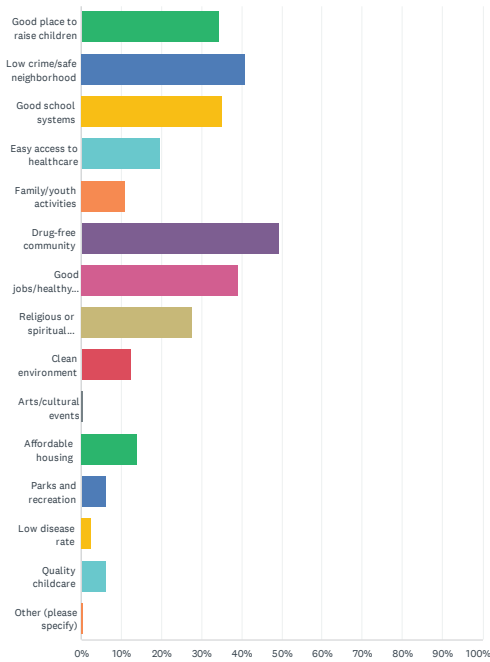
Answers Top Three	% of Respondents
Drug-free community	49.30%
Low crime/safe neighborhood	40.85%
Good jobs/healthy economy	39.20%

What do you think are the THREE groups the needs the most help with access to health care?

Top Three Answers	% of Respondents
Elderly	29.93%
Low-income families	28.50%
Middle Class	8.70%

Q1 What do you think are the THREE most important factors for a "Healthy Community?" (Those factors which most improve the quality of life in a community) Check THREE:

Answered: 426 Skipped: 0



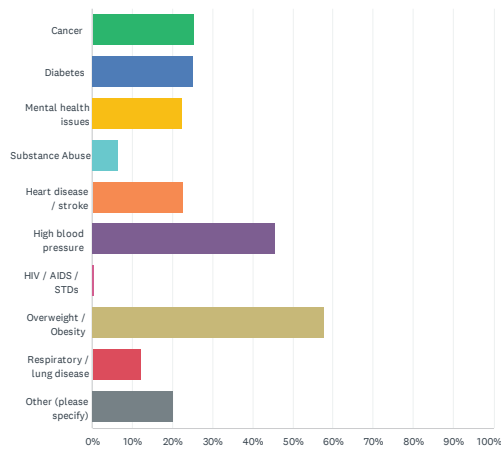
1 / 25

ANSWER CHOICES	RESPONSES	
Good place to raise children	34.27%	146
Low crime/safe neighborhood	40.85%	174
Good school systems	35.21%	150
Easy access to healthcare	19.72%	84
Family/youth activities	11.03%	47
Drug-free community	49.30%	210
Good jobs/healthy economy	39.20%	167
Religious or spiritual values	27.70%	118
Clean environment	12.44%	53
Arts/cultural events	0.70%	3
Affordable housing	14.08%	60
Parks and recreation	6.10%	26
Low disease rate	2.58%	11
Quality childcare	6.10%	26
Other (please specify)	0.70%	3
Total Respondents: 426		

2 / 25

Q2 Select the top THREE health challenges you face

Answered: 426 Skipped: 0



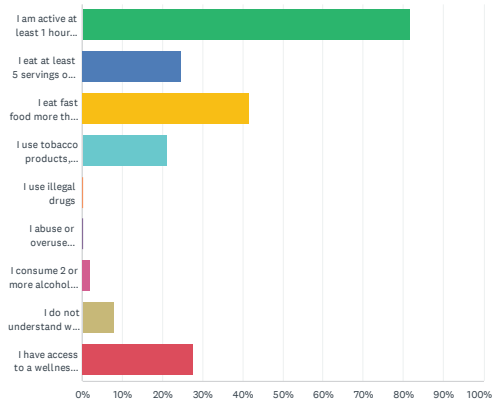
3 / 25

ANSWER CHOICES	RESPONSES	
Cancer	25.35%	108
Diabetes	25.12%	107
Mental health issues	22.30%	95
Substance Abuse	6.57%	28
Heart disease / stroke	22.54%	96
High blood pressure	45.54%	194
HIV / AIDS / STDs	0.70%	3
Overweight / Obesity	57.75%	246
Respiratory / lung disease	12.21%	52
Other (please specify)	20.19%	86
Total Respondents: 426		

4 / 25

Q3 Choose all statements that apply to you

Answered: 414 Skipped: 12

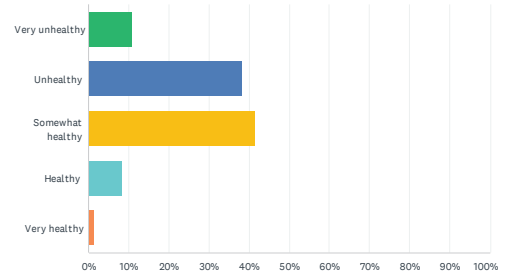


ANSWER CHOICES	RESPONSES	
I am active at least 1 hour a day (active is defined as daily movement activities such as cleaning, yard work)	81.64%	338
I eat at least 5 servings of fruit and vegetables each day	24.64%	102
I eat fast food more than two times per week	41.55%	172
I use tobacco products, cigarettes, dip, chew, etc.	21.01%	87
I use illegal drugs	0.24%	1
I abuse or overuse prescription drugs	0.24%	1
I consume 2 or more alcoholic drinks per day	2.17%	9
I do not understand when health care providers speak to me using medical terms	7.97%	33
I have access to a wellness program through my employer	27.78%	115
Total Respondents: 414		

5 / 25

Q4 How would you rate Casey County as a "Healthy Community?"

Answered: 421 Skipped: 5

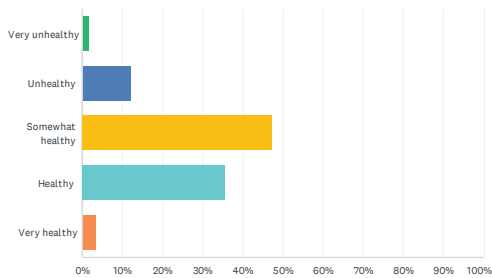


ANSWER CHOICES	RESPONSES	
Very unhealthy	10.93%	46
Unhealthy	38.24%	161
Somewhat healthy	41.33%	174
Healthy	8.31%	35
Very healthy	1.19%	5
TOTAL		421

6 / 25

Q5 How would you rate your own personal health?

Answered: 423 Skipped: 3

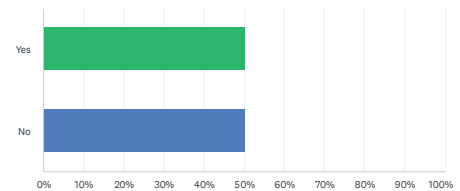


ANSWER CHOICES	RESPONSES	
Very unhealthy	1.65%	7
Unhealthy	12.06%	51
Somewhat healthy	47.28%	200
Healthy	35.70%	151
Very healthy	3.31%	14
TOTAL		423

7 / 25

Q6 Are you satisfied with the healthcare system in your county?

Answered: 416 Skipped: 10

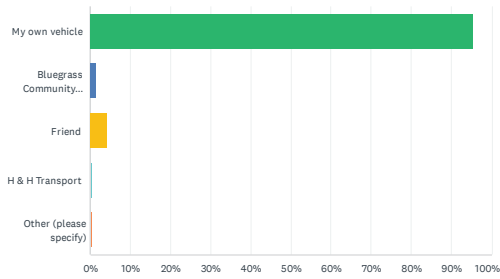


ANSWER CHOICES	RESPONSES	
Yes	50.00%	208
No	50.00%	208
TOTAL		416

8 / 25

Q7 Which of the following forms of transportation do you use?

Answered: 424 Skipped: 2

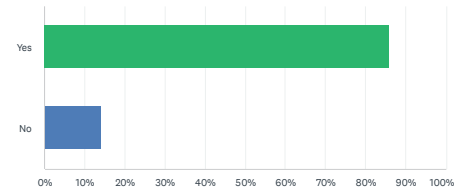


ANSWER CHOICES	RESPONSES
My own vehicle	95.52% 405
Bluegrass Community Action	1.42% 6
Friend	4.25% 18
H & H Transport	0.47% 2
Other (please specify)	0.47% 2
Total Respondents: 424	

9 / 25

Q8 Are you able to visit a doctor when needed?

Answered: 425 Skipped: 1

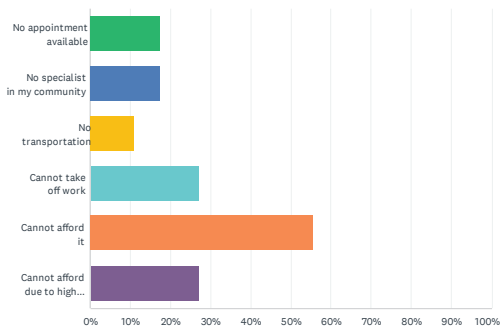


ANSWER CHOICES	RESPONSES
Yes	85.88% 365
No	14.12% 60
TOTAL	425

10 / 25

Q9 If you answered "No" to number 8, please choose ALL reasons why below.

Answered: 63 Skipped: 363

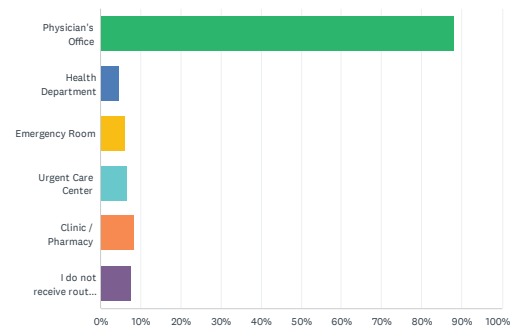


ANSWER CHOICES	RESPONSES
No appointment available	17.46% 11
No specialist in my community	17.46% 11
No transportation	11.11% 7
Cannot take off work	26.98% 17
Cannot afford it	55.56% 35
Cannot afford due to high deductible	26.98% 17
Total Respondents: 63	

11 / 25

Q10 Where do you go for healthcare?

Answered: 424 Skipped: 2

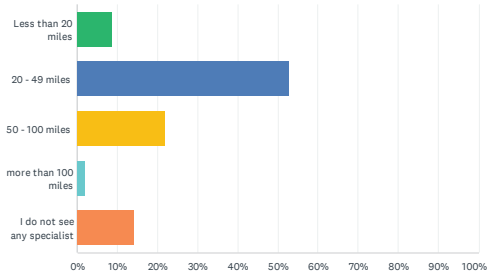


ANSWER CHOICES	RESPONSES
Physician's Office	87.97% 373
Health Department	4.72% 20
Emergency Room	5.90% 25
Urgent Care Center	6.60% 28
Clinic / Pharmacy	8.25% 35
I do not receive routine healthcare	7.55% 32
Total Respondents: 424	

12 / 25

Q11 How far do you travel to see a specialist?

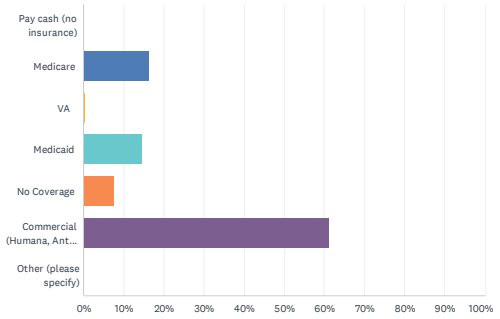
Answered: 423 Skipped: 3



13 / 25

Q12 What type of healthcare insurance coverage do you have?

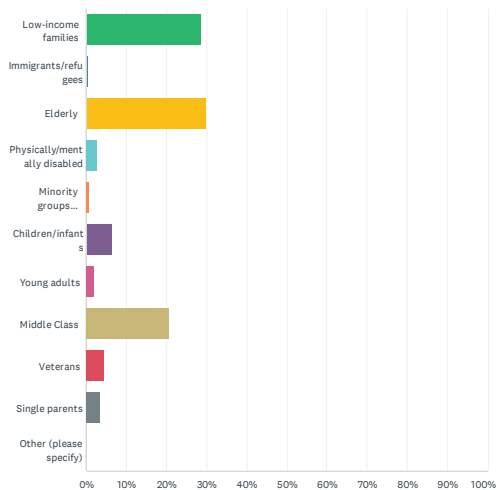
Answered: 421 Skipped: 5



14 / 25

Q13 What group needs the most help with access to health care?
(Choose only one)

Answered: 421 Skipped: 5



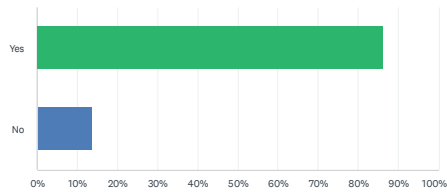
15 / 25

ANSWER CHOICES	RESPONSES
Low-income families	28.50% 120
Immigrants/refugees	0.48% 2
Elderly	29.93% 126
Physically/mentally disabled	2.85% 12
Minority groups (Hispanic, African Americans)	0.95% 4
Children/infants	6.41% 27
Young adults	2.14% 9
Middle Class	20.67% 87
Veterans	4.51% 19
Single parents	3.56% 15
Other (please specify)	0.00% 0
TOTAL	421

16 / 25

Q14 Would you be in favor of a smoke free ordinance for your community (no smoking in indoor public places?)

Answered: 424 Skipped: 2

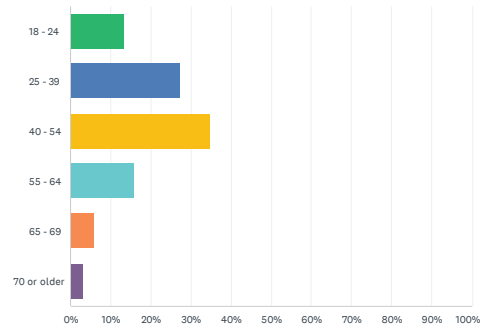


ANSWER CHOICES	RESPONSES
Yes	86.32% 366
No	13.68% 58
TOTAL	424

17 / 25

Q15 Age

Answered: 422 Skipped: 4

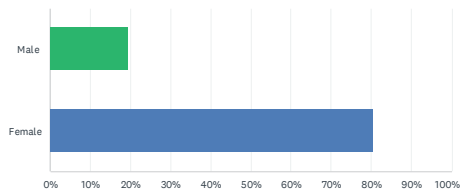


ANSWER CHOICES	RESPONSES
18 - 24	13.27% 56
25 - 39	27.25% 115
40 - 54	34.83% 147
55 - 64	15.88% 67
65 - 69	5.69% 24
70 or older	3.08% 13
TOTAL	422

18 / 25

Q16 Gender

Answered: 414 Skipped: 12

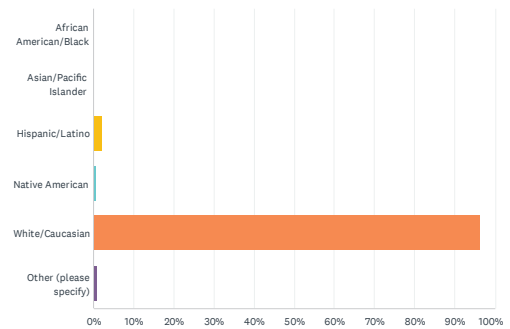


ANSWER CHOICES	RESPONSES
Male	19.32% 80
Female	80.68% 334
TOTAL	414

19 / 25

Q17 Race/Ethnic Group

Answered: 417 Skipped: 9

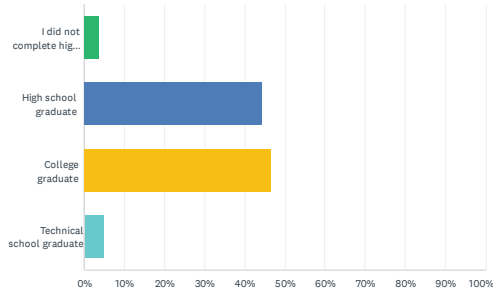


ANSWER CHOICES	RESPONSES
African American/Black	0.00% 0
Asian/Pacific Islander	0.00% 0
Hispanic/Latino	2.16% 9
Native American	0.72% 3
White/Caucasian	96.16% 401
Other (please specify)	0.96% 4
TOTAL	417

20 / 25

Q18 Highest level of education you completed?

Answered: 421 Skipped: 5

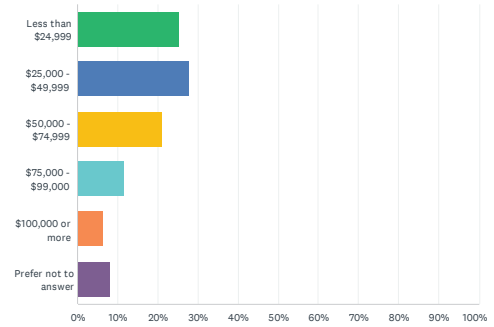


ANSWER CHOICES	RESPONSES
I did not complete high school	3.80% 16
High school graduate	44.42% 187
College graduate	46.79% 197
Technical school graduate	4.99% 21
TOTAL	421

21 / 25

Q19 Household Income

Answered: 418 Skipped: 8

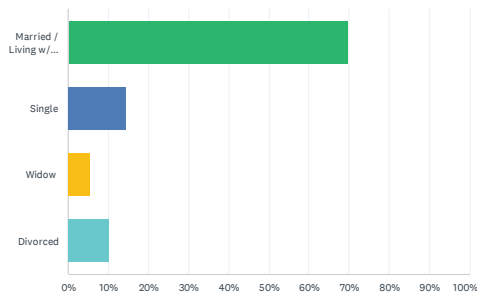


ANSWER CHOICES	RESPONSES
Less than \$24,999	25.12% 105
\$25,000 - \$49,999	27.75% 116
\$50,000 - \$74,999	21.05% 88
\$75,000 - \$99,000	11.48% 48
\$100,000 or more	6.46% 27
Prefer not to answer	8.13% 34
TOTAL	418

22 / 25

Q20 Marital Status

Answered: 404 Skipped: 22

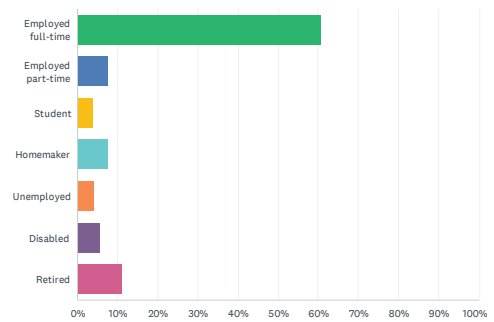


ANSWER CHOICES	RESPONSES
Married / Living w/ Partner	69.80% 282
Single	14.60% 59
Widow	5.45% 22
Divorced	10.15% 41
TOTAL	404

23 / 25

Q21 What is your current employment status?

Answered: 415 Skipped: 11

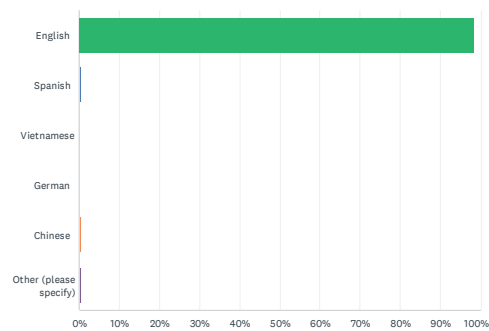


ANSWER CHOICES	RESPONSES
Employed full-time	60.48% 251
Employed part-time	7.47% 31
Student	3.86% 16
Homemaker	7.47% 31
Unemployed	4.10% 17
Disabled	5.54% 23
Retired	11.08% 46
TOTAL	415

24 / 25

Q22 Primary language

Answered: 416 Skipped: 10



ANSWER CHOICES	RESPONSES	
English	98.56%	410
Spanish	0.48%	2
Vietnamese	0.00%	0
German	0.00%	0
Chinese	0.48%	2
Other (please specify)	0.48%	2
TOTAL		416