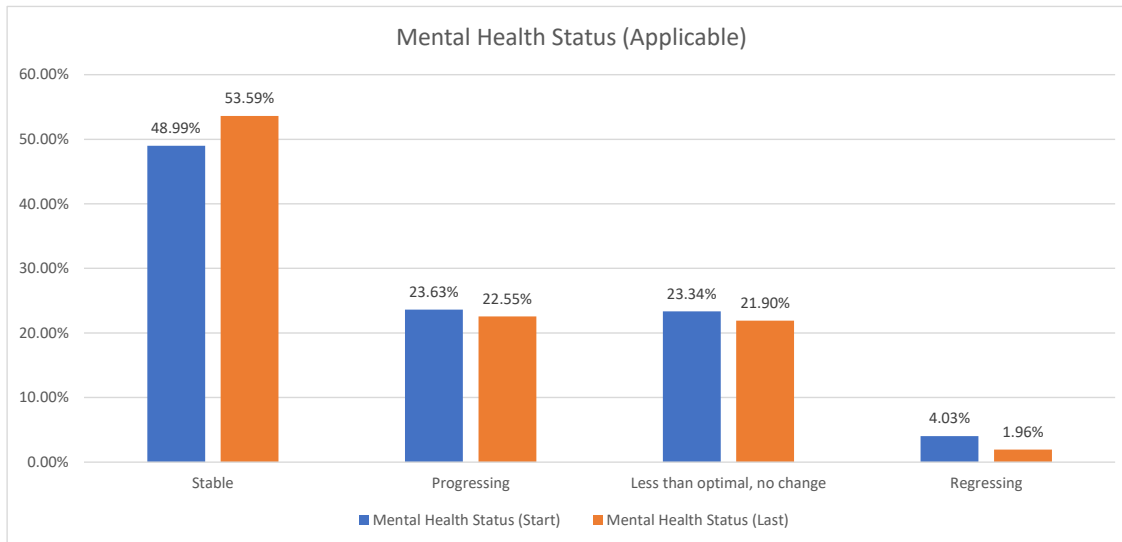


RHOP Progress Report

All Counties



2/10/2020



Stable – not subject to emotional instability or illness; sane; mentally sound (Everything in place for them to succeed); Progressing – growth or development; continuous improvement; a movement towards stability (In process of looking for a job, housing, going to doctor, anything pertaining to recovery); Less than optimal, no change – their situation needs improvement; not progressing; Regressing – to move backward; to revert to an earlier or less advanced state (back in jail, lost job, homeless, substance use)

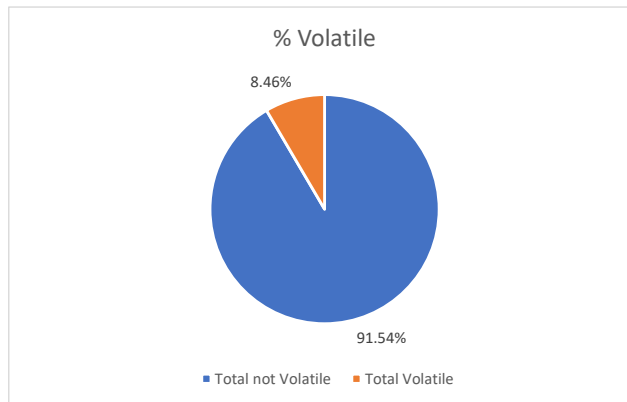
Notes:

Percentages not including "Not Applicable"

	Stable	Progressing	Less than optimal, no change	Regressing		Total
Mental Health Status (Start)	48.99%	23.63%	23.34%	4.03%		100.00%
Mental Health Status (Last)	53.59%	22.55%	21.90%	1.96%		100.00%

Volatility is defined as a client who, at some point during the program, experienced a period of regression. This data is only valid since 11/1/18.

	Volatile	% Volatile
Total not Volatile	357	91.54%
Total Volatile	33	8.46%



Other notes:

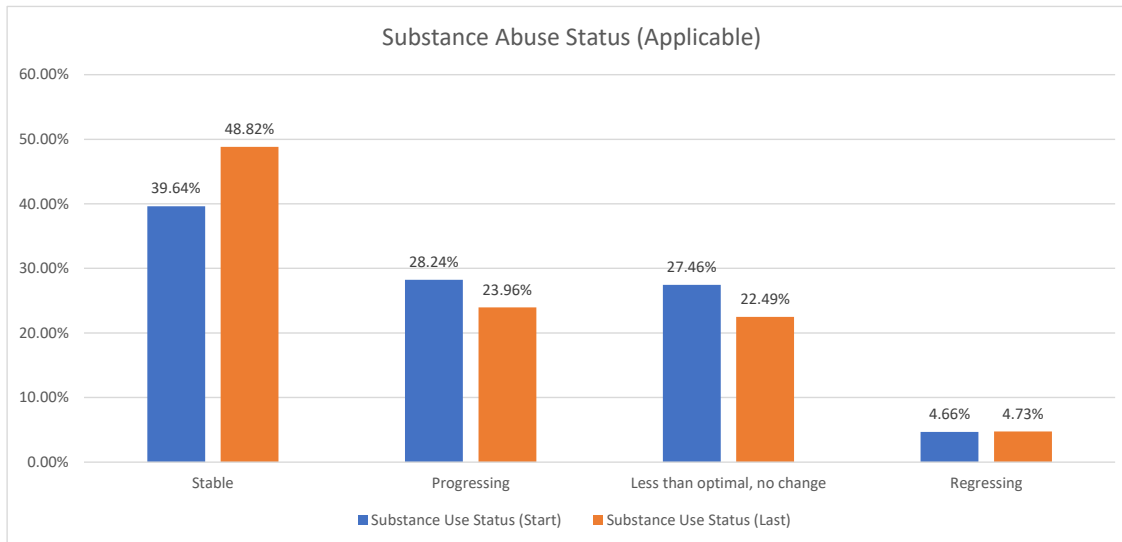
Raw Data

	Stable	Progressing	Less than optimal, no change	Regressing	Not Applicable	Total	Total Applicable
Mental Health Status (Start)	170	82	81	14	43	390	347
Mental Health Status (Last)	164	69	67	6	55	361	306

Percentages including "Not Applicable"

	Stable	Progressing	Less than optimal, no change	Regressing	Not Applicable	Total
Mental Health Status (Start)	43.59%	21.03%	20.77%	3.59%	11.03%	100.00%
Mental Health Status (Last)	45.43%	19.11%	18.56%	1.66%	15.24%	100.00%

Mental health is important to continued success. This is assessed each time contact is made with the participant. If further outreach is needed referrals are made to the appropriate mental health agencies.



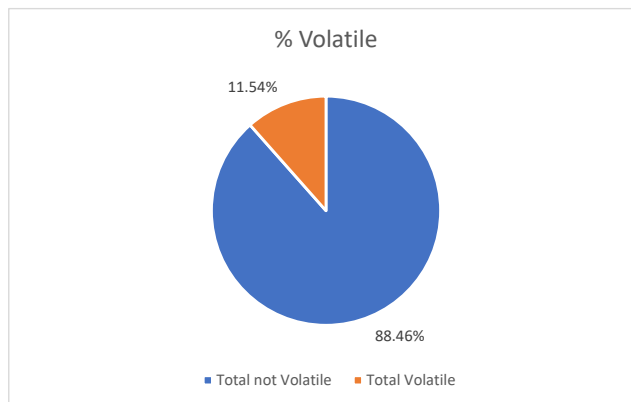
Notes:

Percentages not including "Not Applicable"

	Stable	Progressing	Less than optimal, no change	Regressing		Total
Substance Use Status (Start)	39.64%	28.24%	27.46%	4.66%		100.00%
Substance Use Status (Last)	48.82%	23.96%	22.49%	4.73%		100.00%

Volatility is defined as a client who, at some point during the program, experienced a period of regression. This data is only valid since 11/1/18.

	Volatile	% Volatile
Total not Volatile	345	88.46%
Total Volatile	45	11.54%



Other notes:

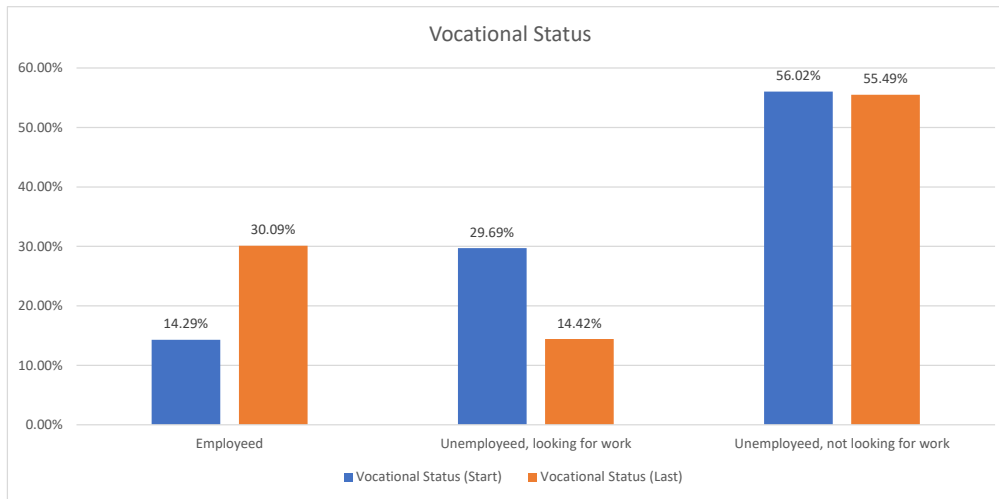
Raw Data

	Stable	Progressing	Less than optimal, no change	Regressing	Not Applicable	Total	Total Applicable
Substance Use Status (Start)	153	109	106	18	4	390	386
Substance Use Status (Last)	165	81	76	16	23	361	338

Percentages including "Not Applicable"

	Stable	Progressing	Less than optimal, no change	Regressing	Not Applicable	Total
Substance Use Status (Start)	39.23%	27.95%	27.18%	4.62%	1.03%	100.00%
Substance Use Status (Last)	45.71%	22.44%	21.05%	4.43%	6.37%	100.00%

Staying clean and sober is imperative to avoid future legal troubles. Therefore, we assess participants' substance abuse status. If relapse occurs, we encourage clients to attend local support group meetings, mental health agencies or rehabilitation facilities.



Notes:

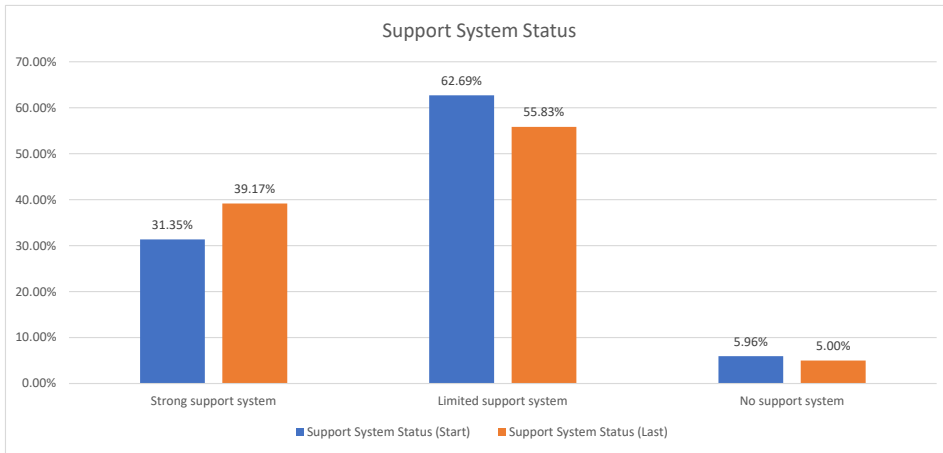
	Employee	Unemployed, looking for work	Unemployed, not looking for work	Total
Vocational Status (Start)	14.29%	29.69%	56.02%	100.00%
Vocational Status (Last)	30.09%	14.42%	55.49%	100.00%

Other notes:

Raw Data

	Employee	Unemployed, looking for work	Unemployed, not looking for work	Total
Vocational Status (Start)	51	106	200	357
Vocational Status (Last)	96	46	177	319

Assisting clients with employment will also help provide them with a stable environment. This will allow them to supply the things they need and work towards goals.



Notes:

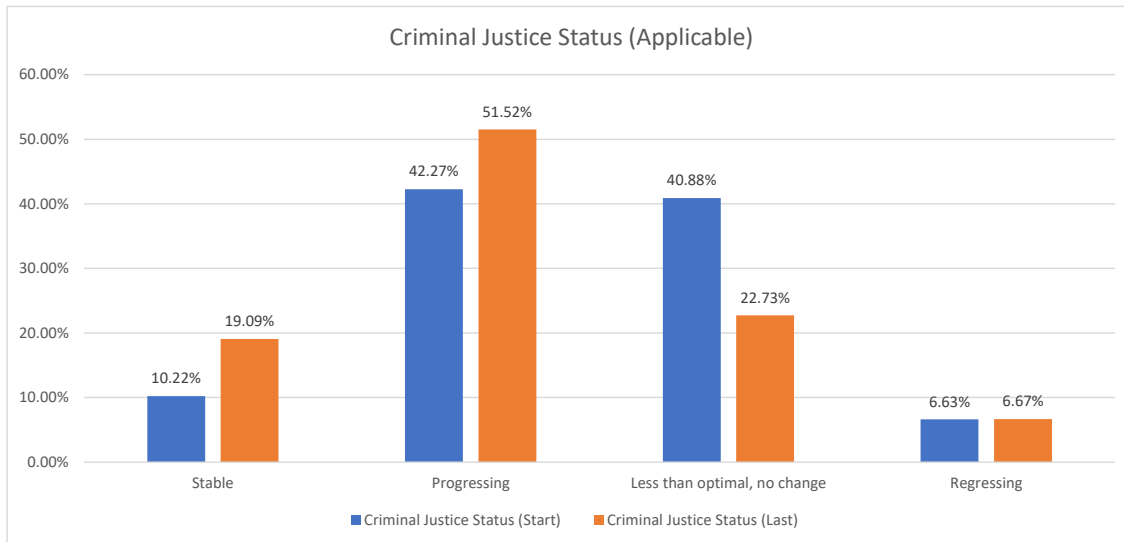
	Strong support system	Limited support system	No support system	Total
Support System Status (Start)	31.35%	62.69%	5.96%	100.00%
Support System Status (Last)	39.17%	55.83%	5.00%	100.00%

Other notes:

Raw Data

	Employed	Unemployed, looking for work	Unemployed, not looking for work	Total
Support System Status (Start)	121	242	23	386
Support System Status (Last)	141	201	18	360

Having a good support system is vital to a participants' success. When speaking with clients the importance of a support system is discussed and encouraged.



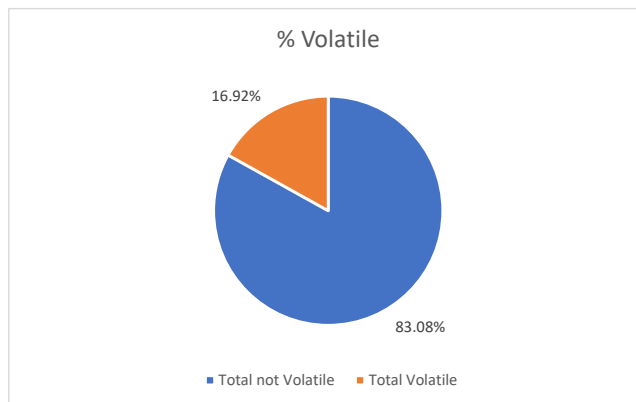
Notes:

Percentages not including "Not Applicable"

	Stable	Progressing	Less than optimal, no change	Regressing		Total
Criminal Justice Status (Start)	10.22%	42.27%	40.88%	6.63%		100.00%
Criminal Justice Status (Last)	19.09%	51.52%	22.73%	6.67%		100.00%

Volatility is defined as a client who, at some point during the program, experienced a period of regression. This data is only valid since 11/1/18.

	Volatile	% Volatile
Total not Volatile	324	83.08%
Total Volatile	66	16.92%



Other notes:

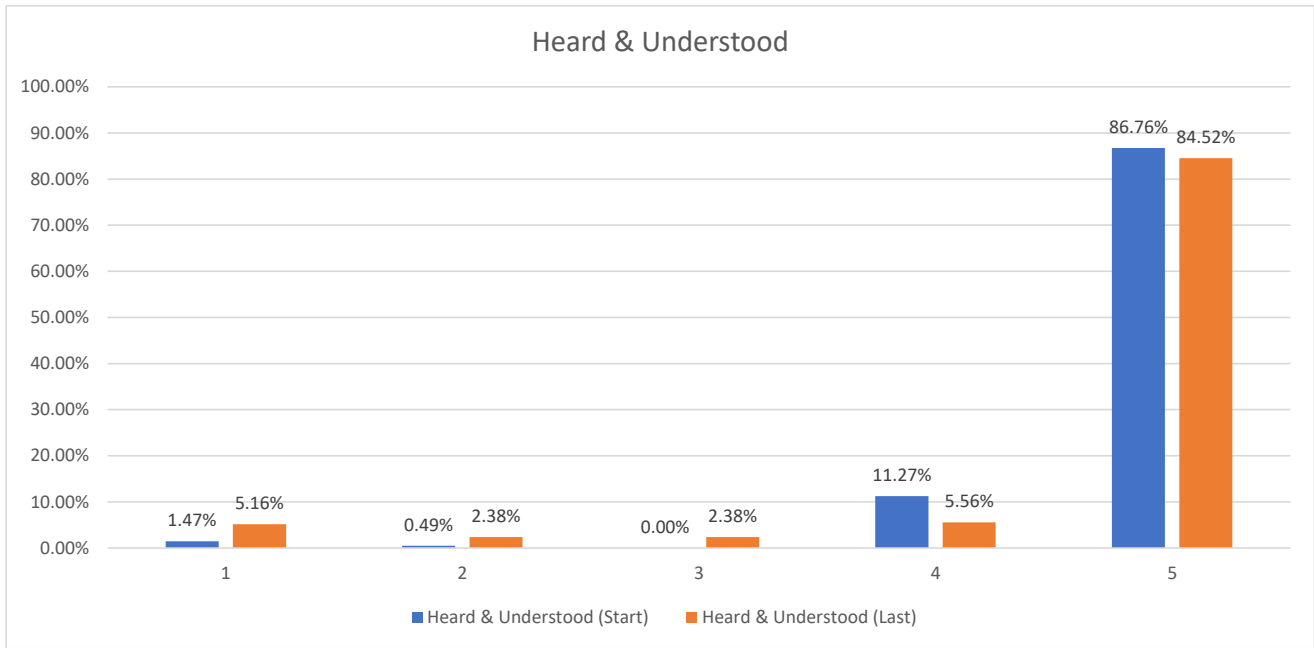
Raw Data

	Resolved	Progressing	Less than optimal, no change	Regressing	Not Applicable	Total	Total Applicable
Criminal Justice Status (Start)	37	153	148	24	28	390	362
Criminal Justice Status (Last)	63	170	75	22	30	360	330

Percentages including "Not Applicable"

0	Resolved	Progressing	Less than optimal, no change	Regressing	Not Applicable	Total
Criminal Justice Status (Start)	9.49%	39.23%	37.95%	6.15%	7.18%	100.00%
Criminal Justice Status (Last)	17.50%	47.22%	20.83%	6.11%	8.33%	100.00%

Our goal is to work with participants' to ensure they meet the requirements of the criminal justice system. During each meeting with the participate this is addressed. Accountability is important to the success of the participate.



Notes:

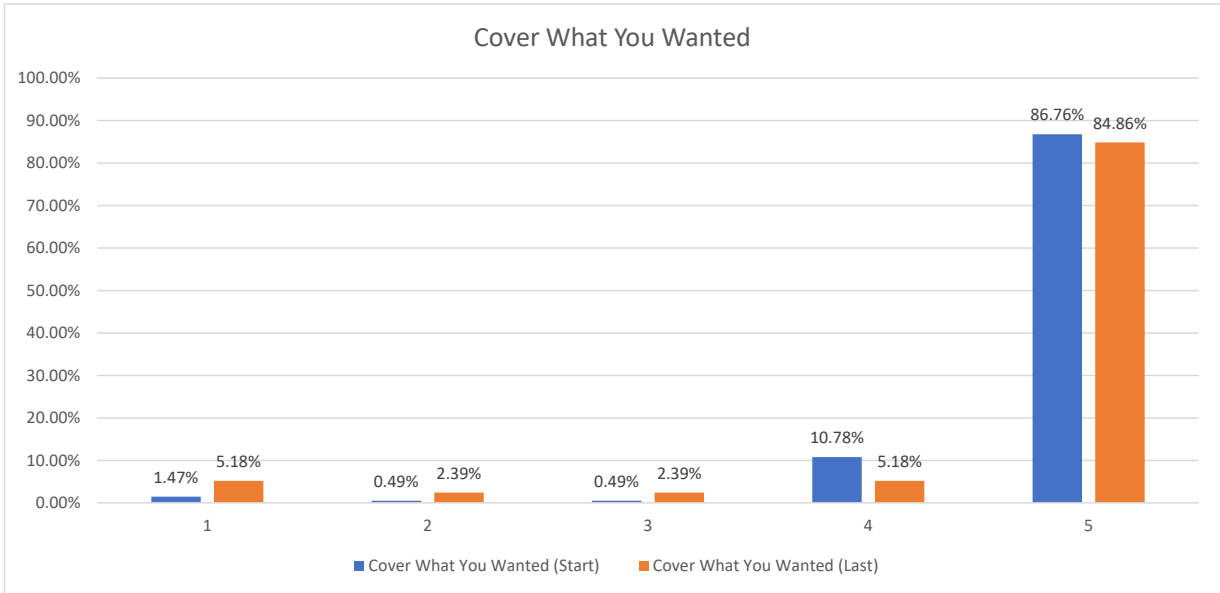
5 is the highest score

	1	2	3	4	5	Total
Heard & Understood (Start)	1.47%	0.49%	0.00%	11.27%	86.76%	100.00%
Heard & Understood (Last)	5.16%	2.38%	2.38%	5.56%	84.52%	100.00%

Other notes:

Raw Data

	1	2	3	4	5	Total
Heard & Understood (Start)	3	1	0	23	177	204
Heard & Understood (Last)	13	6	6	14	213	252



Notes:

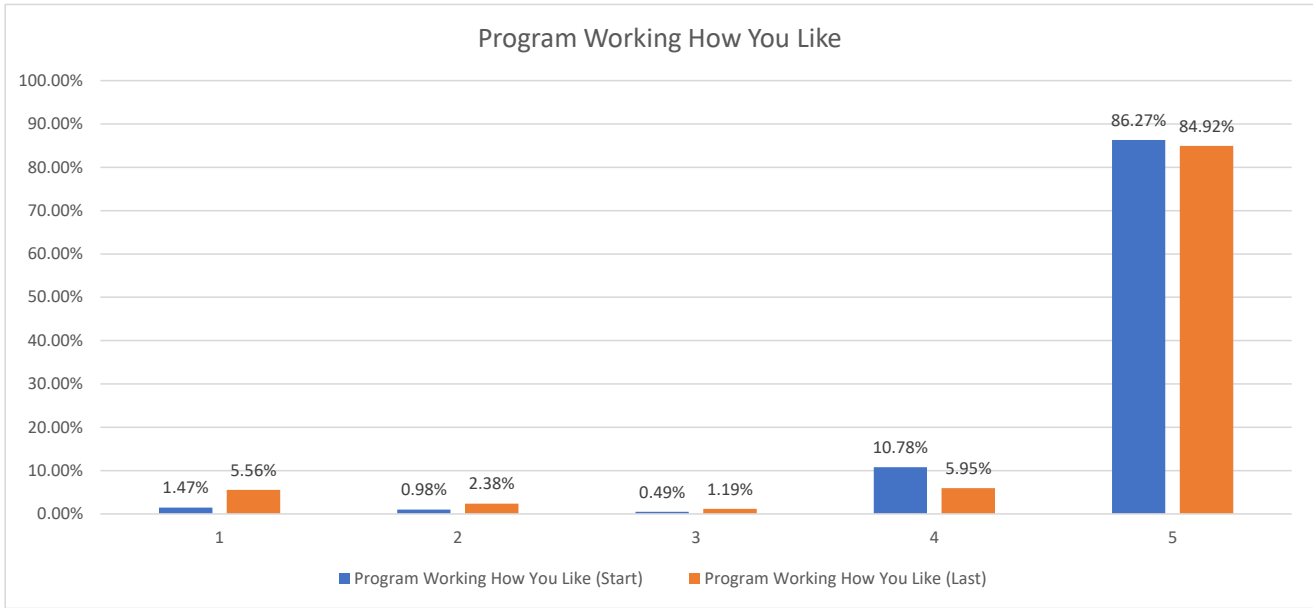
5 is the highest score

	1	2	3	4	5	Total
Cover What You Wanted (Start)	1.47%	0.49%	0.49%	10.78%	86.76%	100.00%
Cover What You Wanted (Last)	5.18%	2.39%	2.39%	5.18%	84.86%	100.00%

Other notes:

Raw Data

	1	2	3	4	5	Total
Cover What You Wanted (Start)	3	1	1	22	177	204
Cover What You Wanted (Last)	13	6	6	13	213	251



Notes:

5 is the highest score

	1	2	3	4	5	Total
Program Working How You Like (Start)	1.47%	0.98%	0.49%	10.78%	86.27%	100.00%
Program Working How You Like (Last)	5.56%	2.38%	1.19%	5.95%	84.92%	100.00%

Other notes:

Raw Data

	1	2	3	4	5	Total
Program Working How You Like (Start)	3	2	1	22	176	204
Program Working How You Like (Last)	14	6	3	15	214	252